

USER MANUAL

Hisha



Thank you for Being our Customer!

Dear Customer,

We sincerely appreciate your purchase of KYK alkaline water Ionizer medical substance producer and we hope your health and happiness.

Before operating the product, you must read the user manual carefully.

You can know not only how to use but also the strong points of the product with a manual, use the strong points well to select custom water for various purposes and use it effectively, and, moreover, optimize the performance and life of the product.

All employees of our company promise to think in customer's shoes at all times and be dedicated to the benefits, health, and happiness of the customer.

Thank you.

Sincerely

 **KYK 김영귀 환원수**

President

김영귀

| Table of Contents |

● Special Features	4
● Major Components	5
● Parts and Features	6
● Before installation	7
● Installation	8
● Installation checklist	13
● How to use	14
● When to change the filters	16
● How to change the filters	17
● Summary of Operation Notices	20
● Notices for Safety	20
● Product Specifications	22
● Warranty Registration	23

※Note: This product is a medical substance producer and you should read this manual carefully before operating the product.

Special Features



1. Selection, creation, and flow of custom water for various purposes
 - ① Child water and adult water (Alkaline water 1st~2nd stage)
 - ② Water to make tea, cook, and wash veggies and fruit (Alkaline water 3rd~4th stage)
 - ③ Water for skin (Acidic water 1st~2nd stage)
 - ④ Water to take medicine or drinking water (Purified water)
2. KYK's patented invention of the platinum-coated titanium electrode structure and electrolyzer system
3. Newly-developed high-performance ceramic valve system
 - ① Available without a booster pump under low water pressure,
 - ② Easy adjustment of water pressure without a reducing valve under high water pressure,
 - ③ Semi-permanent newly-developed high-performance ceramic valve system
4. High-performance, high-efficiency SMPS power control system with little power loss and low heating
5. Minimized failure and maximized life by the newly-developed cutting-edge modularization system by part of the inner structure
6. Newly-developed control system from detection and control of the amount of filter use to the use period
7. Automatic pH adjustment system depending on the amount and the velocity of raw water flowing in the product
8. Maximized convenience and safety with the automatic post-washing system that prevents the platinum-coated titanium electrode in the electrolyzer from being critically plated and the automatic discharge system that drains stagnant water from the electrolyzer and the filter simultaneously



Major Components



Body

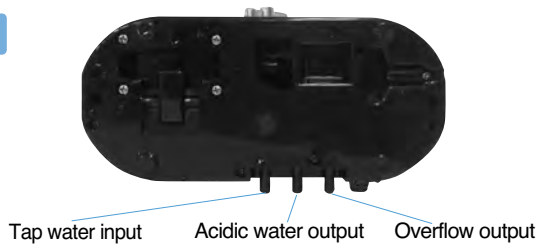
[Front]



[Back]



Bottom



Accessories



User manual



Tubing



pH test drops



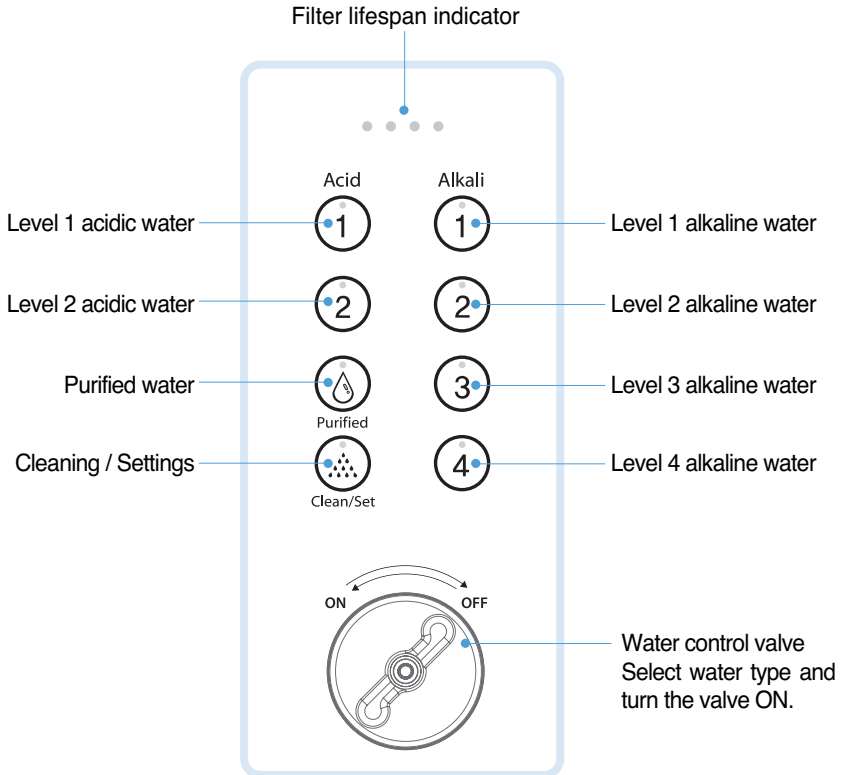
Diverter valve



6x8 90°
elbow connectors



Control Panel



Clean/Set

Cleaning/Settings:

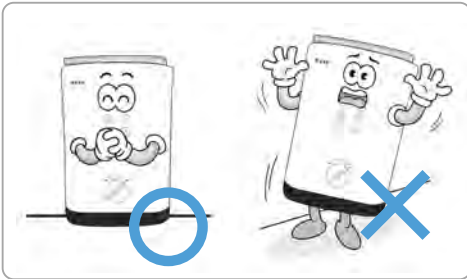
Tap to start cleaning cycle or access settings.

Cleaning starts automatically every 30 liters of continuous use to protect electrolysis chamber.

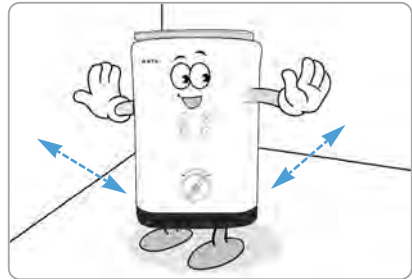
Before installation



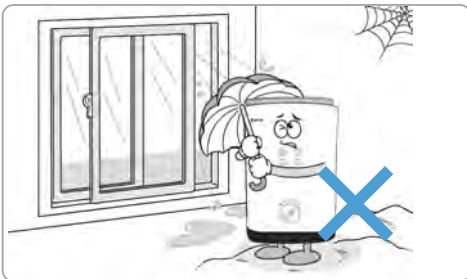
Read the recommendations below before installing the ionizer



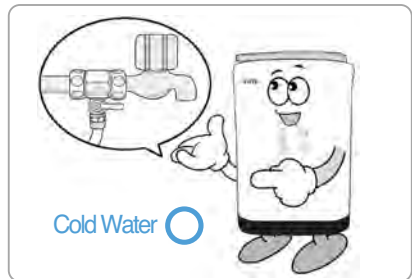
Do not tilt the product



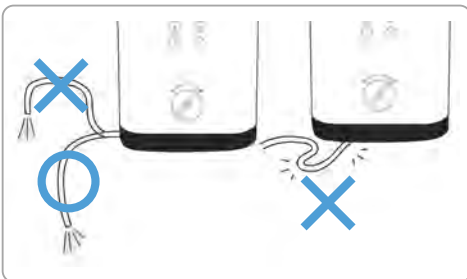
Install the product at least 10 cm away from walls.



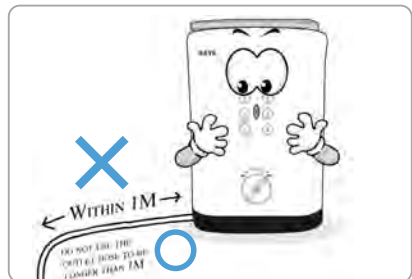
Keep the product in dry places, avoid high moisture areas or direct sunlight.



Connect the ionizer only to cold water supply. Damage resulting from connecting the ionizer to hot water supply is not covered by the warranty.

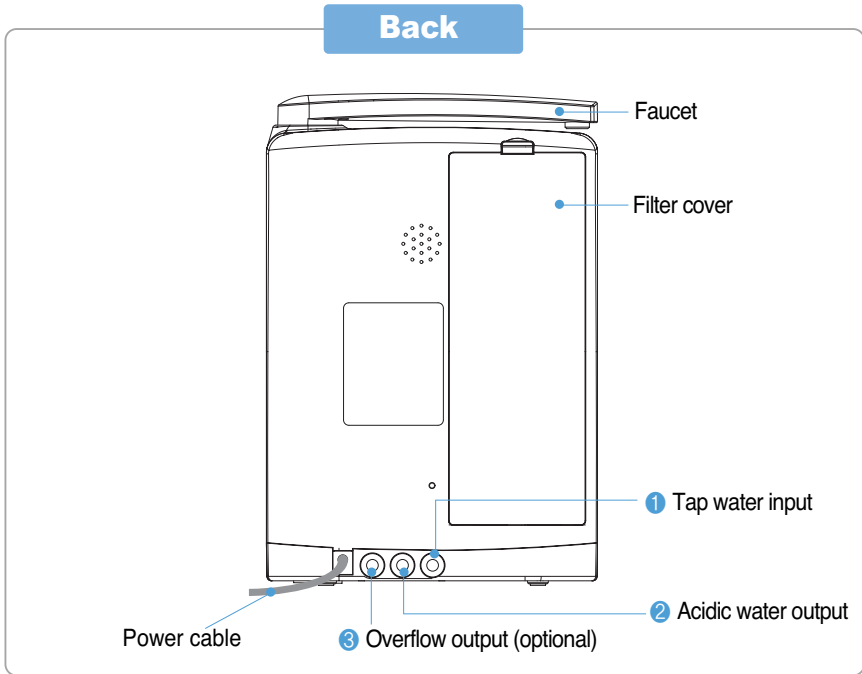


Acidic water tubing must not be raised higher than the base of the product.



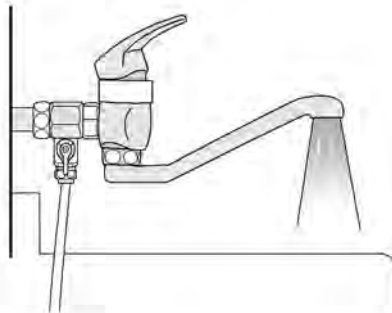
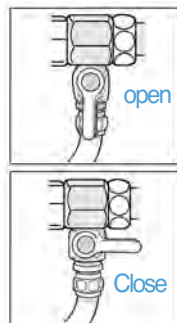
Within 1M, do not use the outlet hose to be longer than 1M

Installation



1

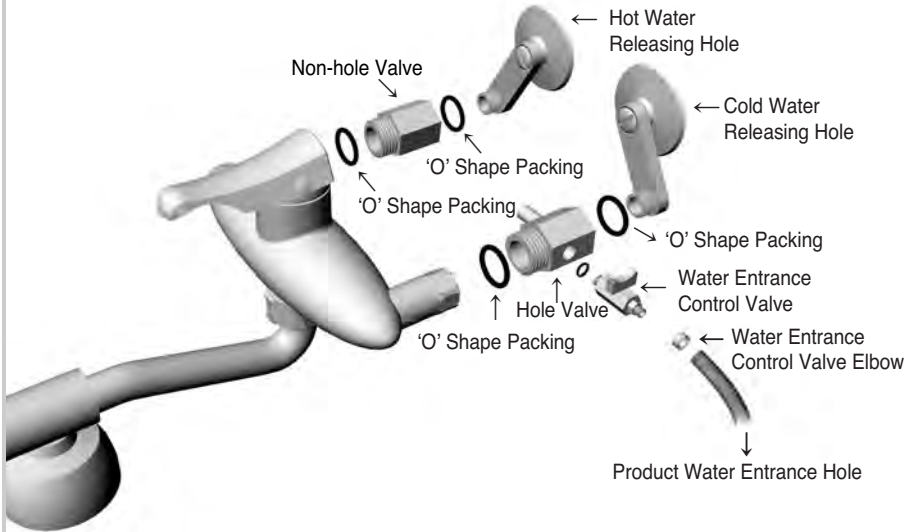
Lock the tap water; connect the device to cold water supply. The hose included with the device is 6 \varnothing :1/4 inch.



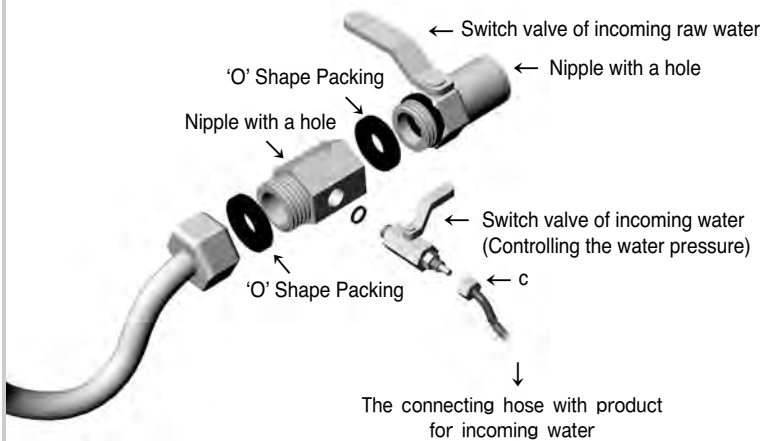
Installation



Installation of separation cool and hot water type



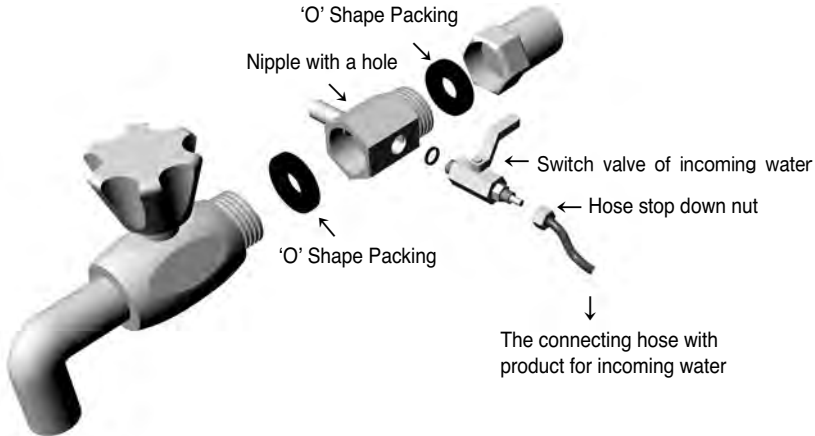
Under sink installation



Installation



General model type installation



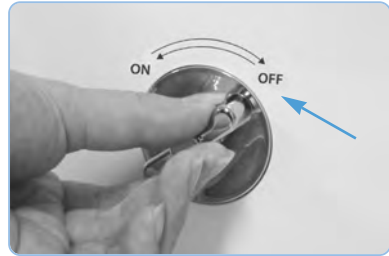
CAUTION

- All hookup part of pipe arrangement has to be covered by teflon tape for avoiding the leakage and you control the bounding number of tape for keeping the level of a horizontality and a perpendicularity.
- When you decompose and reassemble the product, if you give the over force, it will be possible to leak after assembling the product because of a pipe arrangement distortion of raw water, a break out of rubber packing and a breakage.
- If you stop down the nut too strong, the water will be possible to leak because the hose in the hose stop down nut can be torn. Or if you stop down the nut too loose, the water will leak because the hose is missed from the switch valve. So you connect the hose safely by giving the proper strength carefully.
- If you mix up the raw water inlet with the acidic water outlet, alkali water will not be produced and be the cause of a failure. So you must not install reversely between the raw water inlet and the acidic water outlet. If the failure happens because of a reverse installation, the man who installs the product will have to be charged with the failure.

Installation



- 2 Turn off the water control valve before connecting the water supply tubing to the ionizer.



- 3 Firmly attach 90° elbow connectors to water input and output on the back of the ionizer.



- 4 Firmly connect water supply and drain tubing to the elbow connectors.



CAUTION Inlet, outlet check

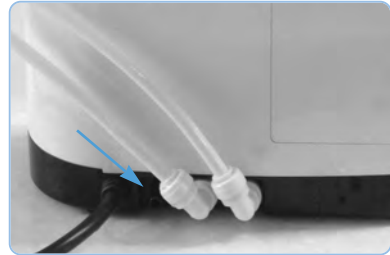
Because a confusion between the inlet of raw water and the outlet of acidic water not only prevents alkaline water from being created but also causes a severe failure of the product, make sure not to install the inlet of raw water and the outlet of acidic water in the opposite way.

Installation



5

Firmly connect the hose for acidic water output



CAUTION

- Cut the acidic water hose within 1m. Failure to do so may lead to the different ratio of alkaline water and acidic water, and taste of water.
- The end of the hose for acidic water output must be lower than the device.
- Firmly installed hose goes about 1.5 cm inside the output nest

6

Open the tap water and plug the device into a wall outlet. You will hear a start-up sound and all lights will turn on for 3 seconds. Then water will be automatically set to level 2 alkaline water.

Turn the faucet and open the water control valve (ON) to start water flow.



CAUTION

Check the hose connections for leaks before using the device.

- Open the water tap first to fully drain rust waste before operating the product since rust waste caught in the water pipe may come out due to the corporation cock mounted in the water pipe.

Installation checklist



How to check the water pressure and set up

If the water pressure is too low or high, the buzzer will be sounded, when you drain the water. The machine will sound the warning, if the water pressure is lower than 0.5liter, higher than 3.5liter. When you install the machine for the first time, turn on the machine with closed water pressure controlling valve, and then slowly open the valve to adjust the water pressure. (The proper water pressure for the normal operation is 1.5~3.0kgf/cm²)

① When you use a measuring instrument: Measure the pressure of raw water with a measuring instrument and if the water pressure is low then please adjust the water pressure by using the water pressure controlling valve.

② When you do not have a measuring instrument (A simple measuring way): If water can be filled in the vending machine cup during 6~7 seconds, the water pressure is about 1.8ℓ /min and it is the proper water pressure for operating the machine.

The case that ground water or solid quality of water is used

- If the quality of groundwater is bad, you must mount a preprocessing filter.
- In the area which has high solidity and calcareous, there is soiled as white by the calcium, so in the middle of water flow, you push the acidic water button 2~3 times in the week and drain water during 30~60 seconds.

If there is an improper ratio of alkaline water and acidic water

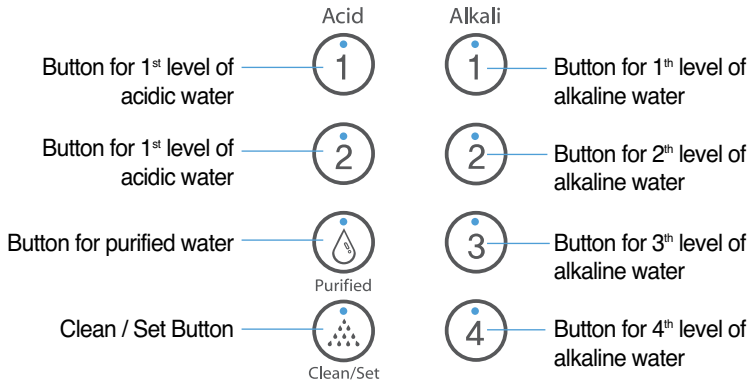
Water pressure is too improper.

- If the water pressure is too low, then there will be too much acidic water and not enough alkaline.
- Depends on the fluid pressure and fluid speed, there would be several changes, so it's not a failure of machine.
- Check to make sure the draining hose isn't bent or kinked. If it is, there won't be enough acid water and the alkaline water will be weak.

How to use



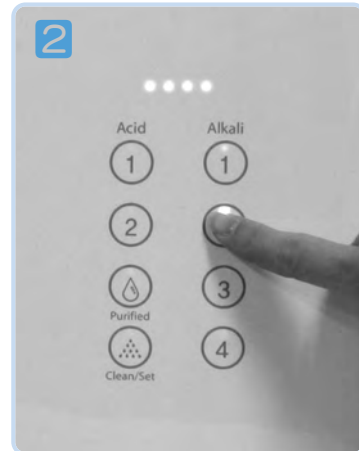
Once you touch the button, the LED light will be turned on.



How to operate

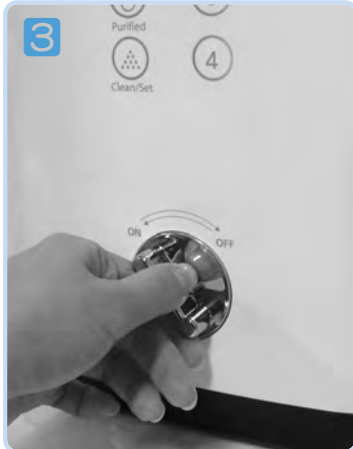


Pull forward the faucet on the top.

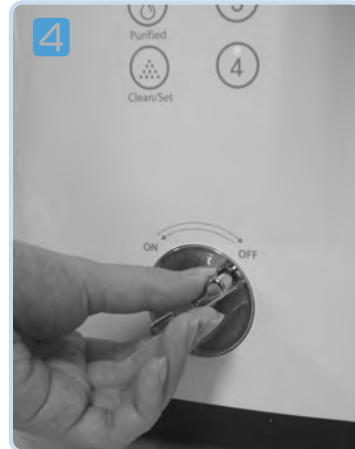


Once touch the button of desired level of water and the LED light will be turned on with buzzer sound.

How to use



Once you turn the On/Off valve to the On side, the water will be drained with flickering of LED light.



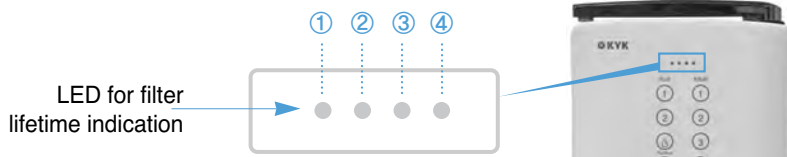
The optimized amount of flow is 1.5ℓ ~2.0ℓ per minute. (including acidic water)

Stop the valve handle in the appropriate location if the water pressure is high.

Turn the On/Off valve to Off side to stop the water.

- Filter LED will indicate the remaining filter life time before flickering the light when start to drain the water.
- After any level of water, automatically will be switched to the 2nd level of alkaline water.
- Auto-cleaning system will be run with buzzer sound to protect the electrolysis chamber when drain the 30 liters of water continuously. (Washing time: about 1 minute)

When to change the filters



■ **Water treatment capacity, service life of filter:**

May vary depending on the region or water quality.

■ **Filter replacement time:**

As the amount of filter use and the use period are applied at the same time, you have to replace the filter if the period comes first even though the filter purification capacity is still left.

On the contrary, if the period is still left, replace the filter if the filter purification capacity is exhausted.



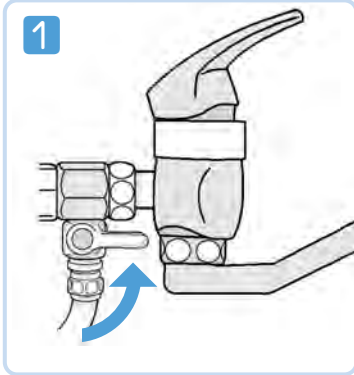
CAUTION

- If the water quality of raw water is low, install a pre-filter.
- In the event that the water flowed out smells, replace the filter although it is before the filter replacement time.
- Replace the filter if the period comes although the filter purification capacity is still left. (LED flickering)

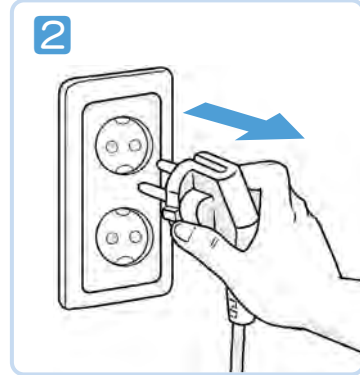
How to change the filters



How to change the filters



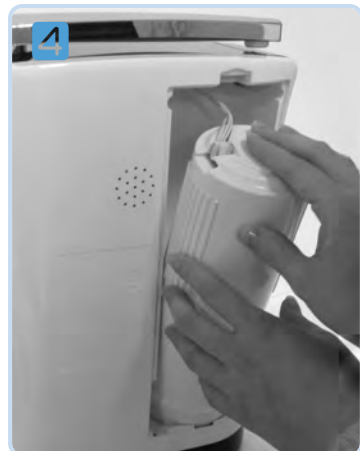
1 Lock the switch valve of incoming water.



2 Unplug the ionizer.

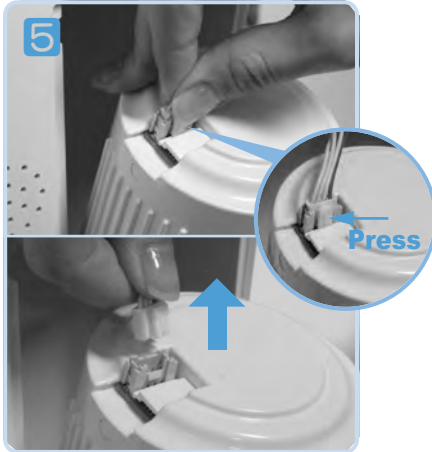


3 Remove the filter cover pushing the hook on it.

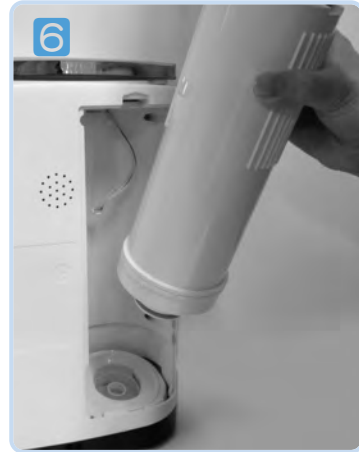


4 Take out the old filter to be replaced by pulling it forward.

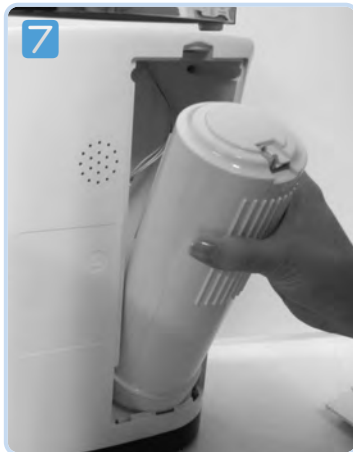
How to change the filters



Unhook the electric wire connected to the filter sensor located on the top of the filter.



Hold the filter and turn it to the right (OPEN), then pull out.



Please remove the safety seal of the new filter. Insert the new filter bottom side first, push in, then turn it to the left (CLOSE).



Make sure that the rubber ring in the connection between the filter and the main body is not detached or jammed. Failure to do so may cause a leak of water.

How to change the filters



Connect the electric wire to the filter monitoring sensor.
Please refer to above picture to be careful with electric wire when you push the filter into a position.



Close the filter cover.
Reconnect the power cord and open the action valve to drain water for 2~3 minutes until the black water is completely drained out before drinking.

Summary of Operation Notices



- Do not use this product for any purpose other than what's described in this manual.
- Do not modify this product intentionally.
- Do not place heavy objects on this product.
- Do not lift this product body holding the stainless steel tube, it will break.
- Always keep the disposal outlet open so water can drain.
- Use AC110V/120V(American type) and AC 220V~240V (European type) with this product.
- Do not use overly contaminated water with this product. Tap water is best.
- If there is a problem with this product, please call your service center.
- Do not use hot water with this product.
- When the filter change signal is displayed, please change the filter as soon as possible.
- When you do not use this product for more than two days, run water through it for 1~2 minutes before using.
- When you use this product for the first time, run water through it for 2~3 minutes.
- When you do not use this product for a long time (over 1 week), please unplug it, remove the filters, and dry it out.
- Be careful when changing the filters to not damage the O ring. Change the filters carefully.
- Do not use well water, groundwater, contaminated water and water contained with high amounts of heavy metals.
- Do not use water hotter than 35°C with this product. Room temperature water is best.
- Do not supply unit with ionized water.
- Do not use alcohol for cleaning and washing the product. (Only use a gentle soap)
- Change the filter regularly.
- Do not take this product apart.
- Do not shock or shake the unit.



To avoid electric shock, leak and /or fire.

- This product must only use AC110V/120V(American type) and AC 220V~240V (European type) .
- Keep the electrical plug free of dust and dirt.
- If the electrical plug is broken, do not use the KYK Product.
- Do not connect too many electrical plugs to one power supply.
- Dry your hands before inserting or removing the electrical plug.
- Do not bend or pull the electrical plug with too much strength.
- Do not take apart or repair the KYK Product without certification.



To avoid problems and failures of the KYK product.

- Do not expose the KYK Product to highly moisturized environments such as rain, your bathroom, or your shower.
- Do not place heavy objects on the KYK Product.
- Install the KYK Product on a solid and horizontal countertop or shelf.
- Only use cold water with the KYK Product.
- Do not move the KYK Product while it is operating.
- Do not shock the KYK Product.



To avoid leakage

- Do not twist or bend the water supply hose.



To avoid staining and peeling.

- Do not use thinner, benzene, or wax when you clean the KYK Product.



To avoid distortion of the KYK Product exterior.

- Keep out of direct sunlight or heat.



To avoid impure water and malfunctioning of the KYK product.

- Be sure to only supply clean, quality water to the KYK Product. Do not hook up directly to a well, lake, river, etc.



Product Specifications



Manufacturer Approval Code	2213	Product Approval Code	15-297
Product Name	Alkaline Water Ionizer / Hisha		
Manufacturing Company	KYK Co.,Ltd (#406-410 Sun-il technopia, 555 Dunchon road, Joongwon-Gu, Sungnam City, Kyunggi-Do, KOREA)		
Manufacturing No. and Date	See Backside of Product		
The object of Product	It is an object of the present product to generate alkaline ionized water with pH 8.5~10.0 by electrolyzing edible water, and it is another object of the present product to generate alkaline ionized water with pH 9.5 conducive to improvement of gastrointestinal disorders (e.g., chronic diarrhea, dyspepsia, abnormal fermentation in stomach and hypergastric acidity).		
Standard Voltage and Frequency	AC220V, 60Hz	Electrical Consumption	150VA
Size and weight	220(W) X 322(H) X 100(D) mm / 2.4kg		
Composition and Water Supply Type	Standing or wall-mounted. Direct connection to tap water.		
Available Temperature	5°C~35°C	Available Water Pressure	3.0kgf/cm ²
Electrolysis Method	Continuous electrolysis (including flow sensor)		
LED Display	Displays levels, water purification, filter life		
Electrolysis	OutputCapacity	Alkali water/minute 2.0 ℓ /min (±10%)	
	Electrolysis Ability	4 levels of Alkaline water, 2 levels of acidic water, filtered only water	
	Electrolysis Cell	5 sheets of Platinized Titanium (Customized design)	
	Electrode Sheet Wash	Automatic washing (controlled by mycom)	
Filter	Filter Life Estimate	3,500 liters (may differ region to region, nation to nation)	
	Message to indicate Filter Change	<p>① When the light of Filter Life LED begin to blink once</p> <p>② If the taste and smell of water is not normal, you should change the filter anyway.</p> <p>③ Indicate the replacement time based on the filter purification capacity or the use period of the filter whichever comes first.</p> <p>④ Use the genuine filter of the company. We are not responsible for the damage caused by using an imitation and no after-sales service is available.</p>	
	Filtering Material (Made in Korea)	Composite filter	Filter change instructions
Power Source Protector	Fuse		
Over-current Detector	Automatically stops the output of electrolytic cells		
Over Temperature Protector	Temperature detector circuit installed inside SMPS power supply automatically stops the device.		

Warranty Registration



Terms of Warranty	one year parts and labor.	Purchase Date	
Customer's	Address	
	Name	
	Phone No	
Seller	Representative	
	Name	
	Phone No	

1. Our company will pay for repair, labor and shipping for one year guarantee performance and operations. If repair of the produce is not possible, we will replace the product.
2. Customer will pay for repair charges including shipping under the following conditions:
 - (1) A malfunction occurs after the warranty has expired.
 - (2) The unit is damaged by the customer.
 - (3) Damage is caused by customer attempting to repair the unit themselves or the unit is repaired by an unauthorized service center.
 - (4) Damage is caused by using the incorrect electrical voltage.
 - (5) Damage is caused by using an imitation filter.
 - (6) Damage is caused by a natural disaster.
 - (7) Damage is caused by exposing the electronics to water or moisture.

KYK