

# WATER IONIZER DION FAMILY

# ALLSBON User Manual

Please read this manual carefully before use and use the product safely and properly.

## Table of Contents

The Basics of Alkaline Ionized Water	3
Drinking Method for Ionized Water & Precautions	4
Safety Instructions	5
Product Contents	9

## Part Names and Functions

Main Machine (Front Side)	11
Main Machine (Back Side, Base)	12

## How to Operate & Use

Water Dispensing Method	13
Filter Replacement Method	14
Operating the Menu Button	15

## How to Install the Main Machine

Precautions to Take Before Installation	16
How to Install Above the Sink	17
How to Install Under the Sink	18

## Frequently Asked Questions

Before Assuming It's a Malfunction	20
Before Assuming that the Machine is Malfunctioning	21
Product Specifications	22

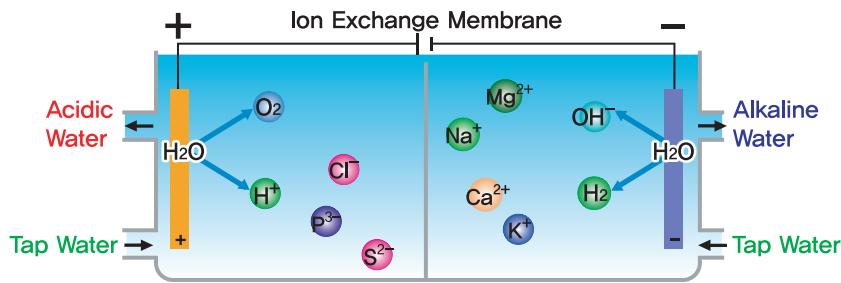
- Keep the manual where you can find it with ease, and please refer to it when needed.
- Store the warranty card after thoroughly filling out the card with information such as the corresponding store at which the product was purchased.
- As this product is for medical use, our company is not held liable for any defect or accident caused by faulty installation or improper use.



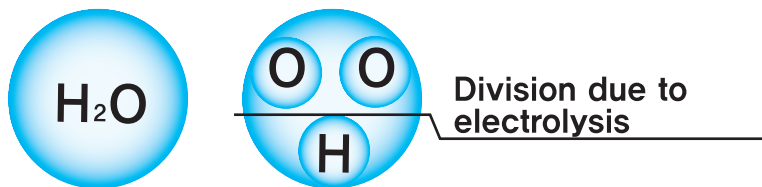
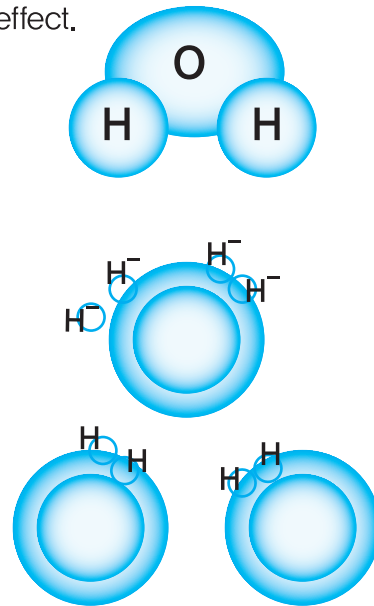


# The Basics of Alkaline Ionized Water

## The Principle of the Water Ionizer



Active Hydrogen – When an ion returns to its atomic state and has a strong deoxidizing effect.



Water ( $\text{H}_2\text{O}$ ) is a regular tetrahedral structure formed by a hydrogen bond between a  $\text{H}^+$  ion and an  $\text{OH}^-$  ion. Commonly, drinking water contains ions such as  $\text{Ca}^{2+}$ ,  $\text{Mg}^{2+}$ ,  $\text{Na}^+$ ,  $\text{K}^+$ ,  $\text{Cl}^-$ ,  $\text{S}^{2-}$  and  $\text{P}^{3-}$ . When water undergoes electrolysis, hydrogen gas ( $\text{H}_2$ ) generates a response reaction that produces a bulk of hydroxide ions ( $\text{OH}^-$ ) (pH range of 7.5~11). On the cathode end, this produces alkaline ionized water abundant in  $\text{Ca}^{2+}$ ,  $\text{Mg}^{2+}$ ,  $\text{K}^+$ , and other minerals. On the other hand, oxygen gas ( $\text{O}_2$ ) generates a response reaction that produces a bulk of active hydrogen ions ( $\text{H}^+$ ) (pH range of 3.5~6.5). On the anode end, this produces acidic ionized water abundant in  $\text{Cl}^-$ ,  $\text{S}^{2-}$ ,  $\text{P}^{3-}$ , and other minerals.



Water's acidity is measured with values ranging from 1 to 14 with 7 as the base measure. Any value over 7 is considered alkaline and any value below 7 is considered acidic.

$$\text{pH} = -\log[\text{H}^+]$$

# Drinking Method for Ionized Water & Precautions

## Drinking Method for Alkaline Ionized Water & How To Use Acidic Ionized Water

- 1. If the machine has not been used for several days, run water through the machine for approximately 1~3 minutes before using the machine. It could lead to a change in the taste of water.
- 2. First-time users are recommended to start drinking small amounts of the water with a pH of approximately 8.5. After that, please control the amount and level of water you drink according to your body's condition.  
*\* Generally, alkaline water with a pH of 8.5~9.5 (Levels 2~3) is most appropriate for consumption.*
- 3. Alkaline ionized water can be stored for up to two days if placed in a refrigerator in an airtight container.

	Initial 7 Days of Consumption			General Everyday Use		
	Children	Adults	Notes	Children	Adults	Notes
Alkaline Ionized Water	pH7.5	pH7.5~8.5	2~3 cups / day	pH7.5~8.5	pH9.5	500ml~1000ml
Acidic Ionized Water	pH5.5	pH5.5	Better if warmed	pH5.5	pH5.5	Better if warmed

- \* It is recommended that one drink 500 ml ~ 1000 ml of alkaline ionized water with pH 9.5. It is also convenient to use the alkaline ionizer because it can also be used as a water filtration system.
- \* A water ionizer is "medical equipment. Please read the "Instructions for Use" and "How to Use" sections thoroughly.
- \* Please take any medications with purified water.

## Drinking Method for Purified Water & Precautions for Use

- 1. Water produced from the purified water setting is chlorine-free water.
- 2. Use purified water to take medication.
- 3. When storing purified water, please use an airtight container and refrigerate.  
It is recommended to store the water for 1~2 days.

## Precautions for Use

- \* Do not drink the following water:
  - Water with a pH higher than 10.0
  - Acidic ionized water
  - Water from the drain outlet
  - Water that contains the pH reagent (BTB solution)



# Safety Instructions

In order to properly and safely use this machine and maintain it in good condition, please read this instruction manual carefully.

- Some components of the machine may be changed to increase product quality, function, or for other reasons. In such a case, the manual may be somewhat inconsistent with the actual product.

## About The Pictures

In this manual, we provide you with pictures to promote proper and safe usage and to prevent any improper use of the machine which could lead to property damage. The pictures and their meanings are as follows:



**Warning**

If not abided by, there is a possibility that it may cause major damage to your body



**Caution**

Improper handling may cause either financial damage or physical damage



**Danger**

Improper handling may cause mortality or serious injury

## Explanation of Signs



To notify the user to be warned, take caution, and of danger



To provide information on general prohibitions



To instruct the user of general actions



To ban the disassembling of the machine when it is likely to cause injury such as electric shock



To instruct users to disconnect the power plug in case of malfunction or electric shortage



## Danger

Improper handling may cause mortality or serious injury



The machine should not be disassembled or repaired by an unauthorized person because it may cause fires or electric shock. The manufacturer/retailer is not liable or responsible if such occurrence happens.



While using the machine, if even a tiny bit of electrical current is felt, please discontinue use. It may cause electrical shock. Please contact your retailer or sales representative.



The machine should not be placed in a humid area such as a bathroom. Do not clean the machine by spraying water on it, as this can cause an electric shock or short circuit the machine.



The power plug should not be touched or operated with wet hands. The machine must be unplugged before disassembling it.



Please follow these instructions when the machine has, by error, fallen into water or it may lead to electric shock.

1. Unplug the power plug from the outlet
2. Take the machine out of the water and dry it in the shade
3. Consult with the retailer or manufacturer



Only use the machine with the specified voltage. If used improperly, it could lead to fire or electrical shock.



Make sure the water hose has not been folded since it might cause water leakage. The drain hose should not be placed higher than the main machine or it may cause a malfunction.



The power cord should not be adjusted with tools such as staples since damaged power cords may cause fire or electric shock.



Do not connect multiple electric appliances into a single power outlet.



If an outlet is covered with dust, remove the power cord from the outlet before cleaning it. If the dust is not removed, it can become a fire hazard.



Do not damage the power cord by bending, pulling, twisting, or putting heavy objects on top of it as this may cause an electrical fire. It could lead to fire or electrical shock.



If the power cord and power plug has been damaged or an outlet comes loose, do not use the machine. Do not place heavy objects on the machine. It could lead to fire or electrical shock.



## Caution

Improper handling may cause either financial damage or physical damage



If the machine has not been used for several days, run water through the machine for approximately 1~3 minutes before using the machine.



First-time users are recommended to start drinking small amounts of the water with a pH of approximately 8.5. After that, please control the amount and level of water you drink according to your body's condition. Generally, alkaline water with a pH of 8.5~9.5 (Levels 2~3) is most appropriate for consumption.



Alkaline water can be stored for up to two days if placed in a refrigerator in an air tight container.



Do not drink the following water:

- Water with a pH higher than 10.0
- Acidic ionized water
- Water from the drain outlet
- Water that contains the pH reagent (BTB solution)

\*If the water smells strange, please refer to the "Frequently Asked Questions."



Do not use this water for aquariums with goldfish or tropical fish. The fish could die due to the change in environment.



Do not use aluminum or brass containers with this water. The water from the water ionizer can tarnish or damage containers made from aforementioned substances.



Please take caution to the following facts regarding the handling of pH reagent.

1. Do not put the reagent into eyes and do not drink the reagent. If it is ingested by mistake, please drink plenty of water to flush out of your system and consult a doctor. If it is put into your eyes by mistake, please rinse with plenty of water and consult a doctor.
2. Store the reagent in an airtight container away from children.
3. Keep the reagent away from fire because it can ignite.



Do not cover the air vent (located at the bottom of the machine) with your hand or with any object and do not put anything inside the vent. This could lead to electrical fires.



Do not block the water passage. This can lead to water leakage or malfunction.



When installing the machine, if the adapter or connector is installed negligently, water leakage can occur. After installing the machine, please check that there are no leaks before use. Our company is not held liable for any damages that occur due to negligence in checking for water leaks.



### Warning

If not abided by, there is a possibility that it may cause major damage to your body

This product has been certified as a medical substance generator by the Korean Food and Drug Administration.



Mind the following when drinking alkaline water.

1. Do not take medications with alkaline water. Medicine should be taken with purified water.
2. Achlorhydric (absence of hydrochloric acid) people should not drink alkaline water.



Do not use undrinkable water (underground water, polluted water). This could be a leading cause in damaging your body or causing malfunction in the machine.

1. Dirty Water
2. Water with high salinity
3. Water with high amounts of iron or rust
4. Water with temperatures above 104 degrees Fahrenheit
5. Please use ordinary tap water with this machine



Do not put objects on top of the machine as it may cause damage to the machine.


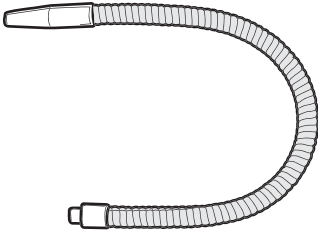
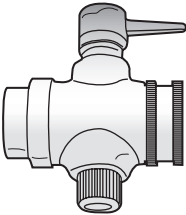

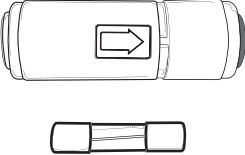
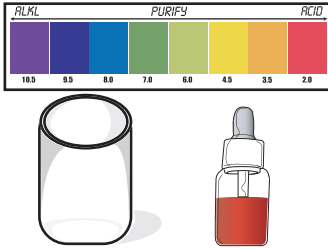

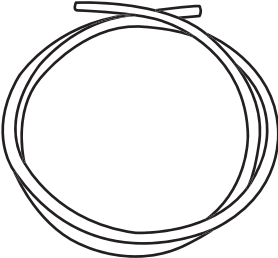


If you choose to mount the machine on the wall, please consult the manufacturer / retailer. Drops can cause malfunction.

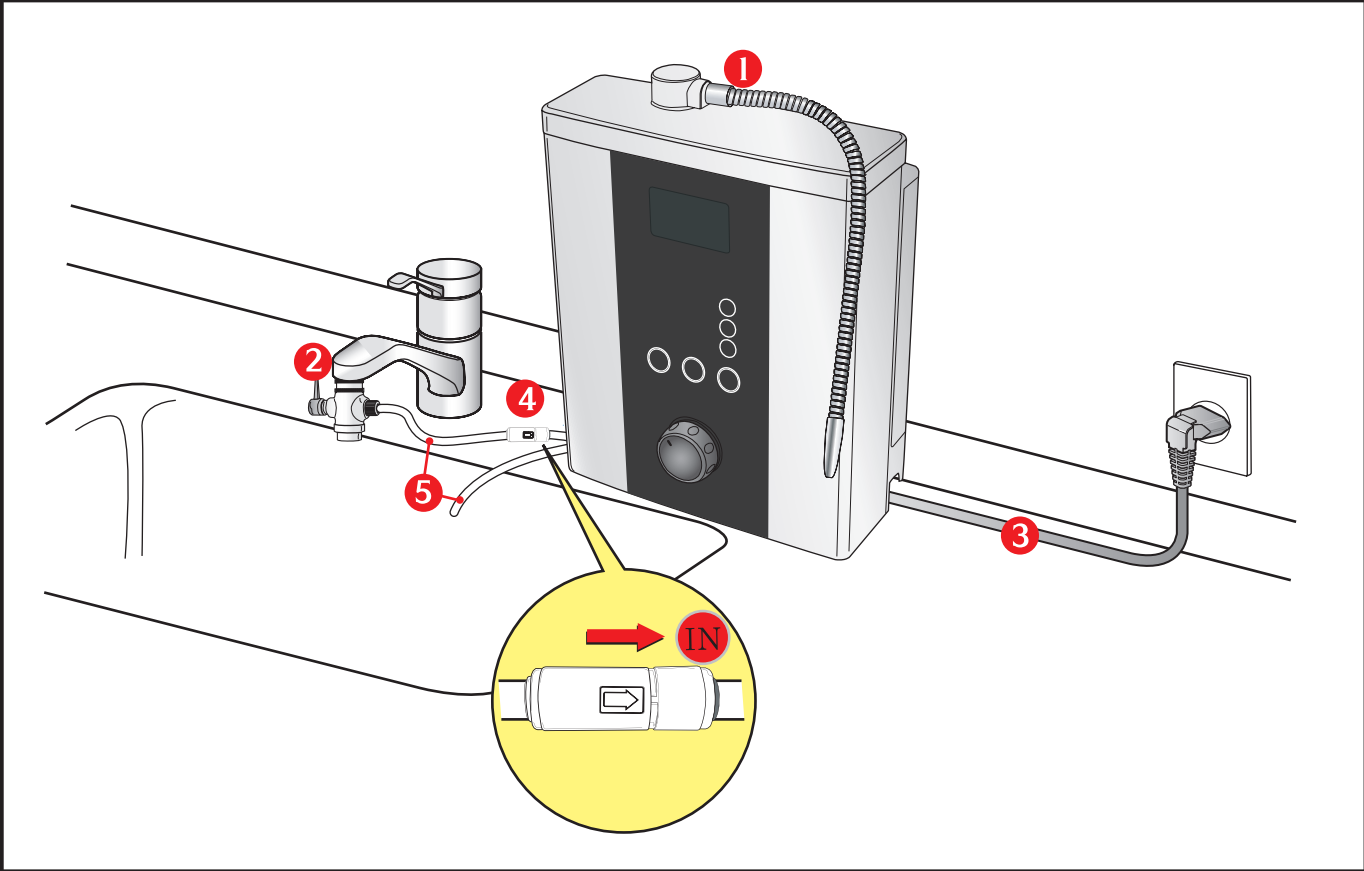
# Product Contents

## Standard Supplies

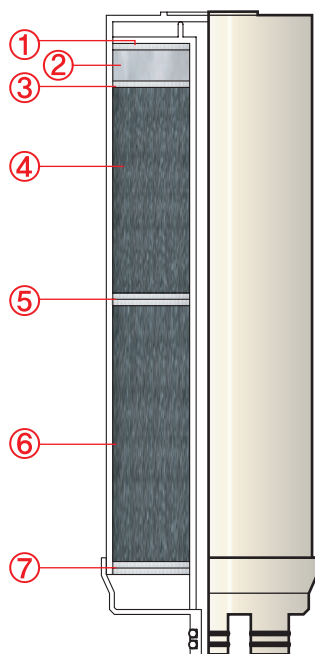
※ They are enclosed with the main machine. Please verify the contents of the set. The displayed products are the basic supplies and may vary depending on the consumer's selection.

User manual	1 Water outlet hose	2 Adapter	3 Power Cord
			
4 Wall-mount nails	Colorimetric analysis chart BTB solution	Wall-mount nails	5 Hose
			

## Examples of application



## Filter Configuration



### Primary Purifying Filter System

#### 1. NON-WOVEN FABRIC

Helps filter out relatively large suspended particles, sand, debris, etc

#### 2. CALCIUM

Removes residual chlorine, and has a higher rate of absorption compared to general activated carbons, further enhancing water's taste

#### 3. NON-WOVEN FABRIC

Helps filter out relatively small suspended particles, sand, debris, etc

#### 4. ACTIVATED CARBON

Coconut-base activated carbon that absorbs and removes organic matter, foreign substances, smells, and tastes, thereby improving the taste of the water

#### 5. NON-WOVEN FABRIC

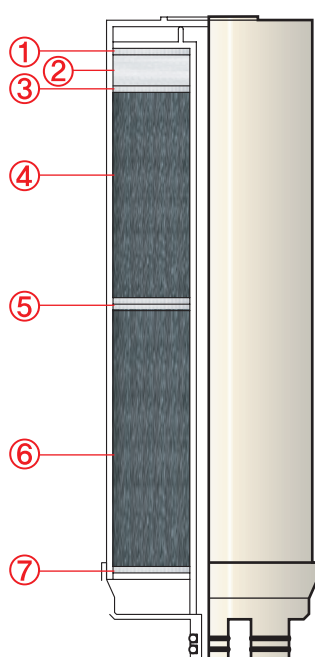
Filters outflows and particles from filtration materials

#### 6. BIO STONE

Maintains proper sterilization by optimizing the anion, and removes the invisible suspended solids, foreign substance made up of particles and bacteria.

#### 7. NON-WOVEN FABRIC

Filters residual particles



### Secondary Purifying Filter System

#### 1. NON-WOVEN FABRIC

Filters outflows of filtration materials as well as precipitated matter

#### 2. CALCIUM

Removes residual chlorine, and has a higher rate of absorption compared to general activated carbons, further enhancing water's taste

#### 3. NON-WOVEN FABRIC

Removes any foreign substances that may remain

#### 4. SILVER ADDED CARBON

Coconut-base activated carbon that absorbs and removes organic matter, foreign substances, smells, and tastes, thereby improving the taste of the water. It also has a sterilizing function.

#### 5. NON-WOVEN FABRIC

Removes precipitated substances and prevents outflows

#### 6. BIO STONE

Maintains proper sterilization by optimizing the anion, and removes the invisible suspended solids, foreign substance made up of particles and bacteria.

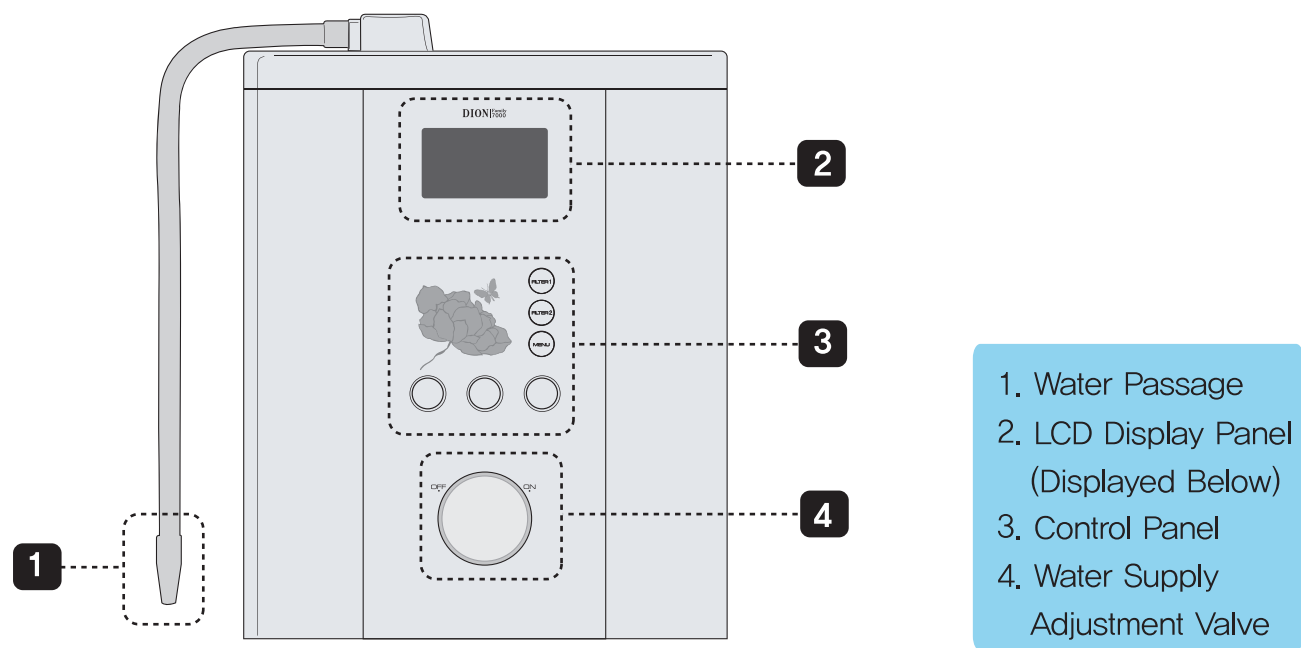
#### 7. NON-WOVEN FABRIC

Removes any outflows from filtration materials and any remnant precipitated substances

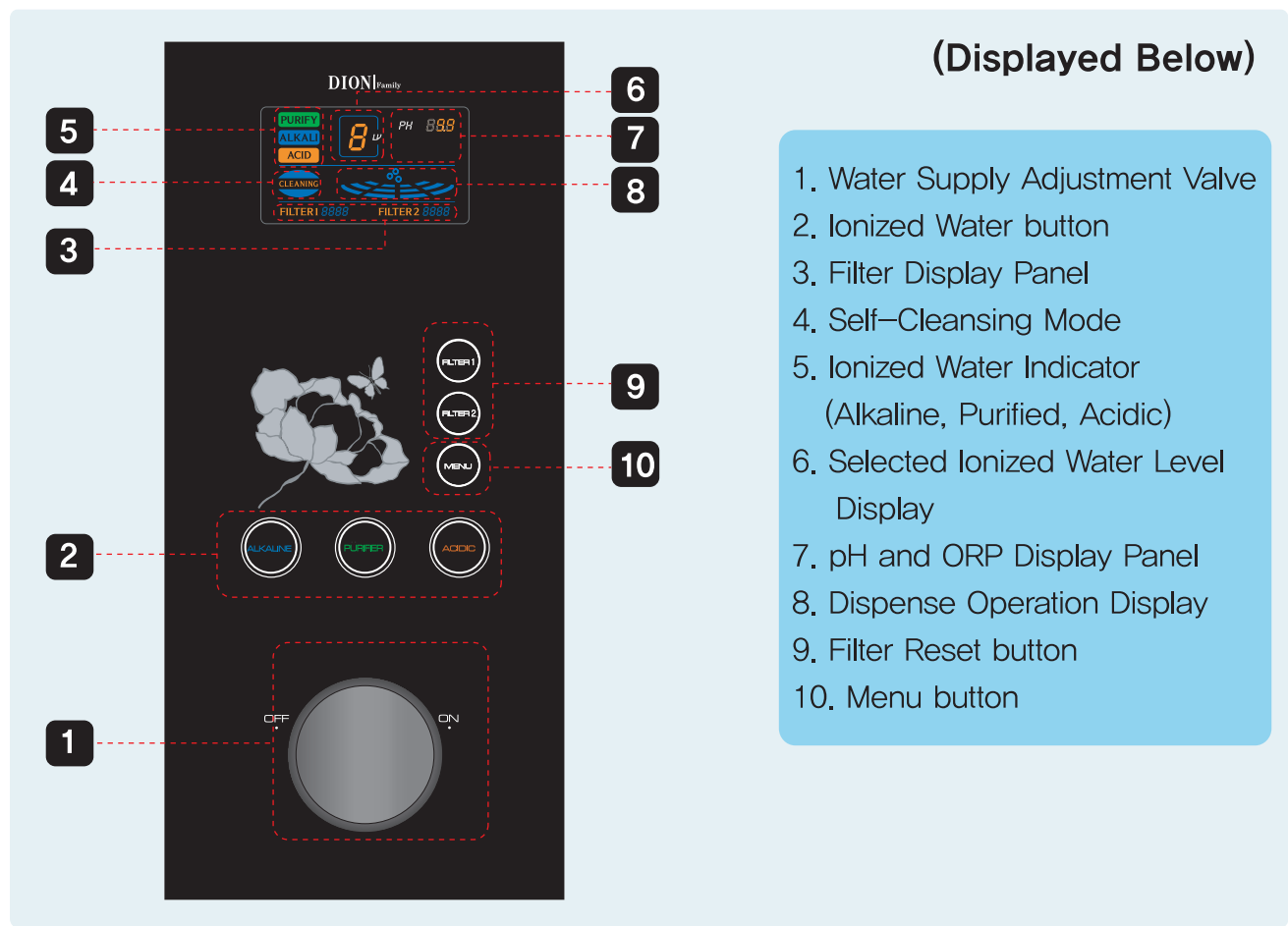
The displayed products are the basic supplies and may vary depending on the consumer's selection.

# Part Names and Functions

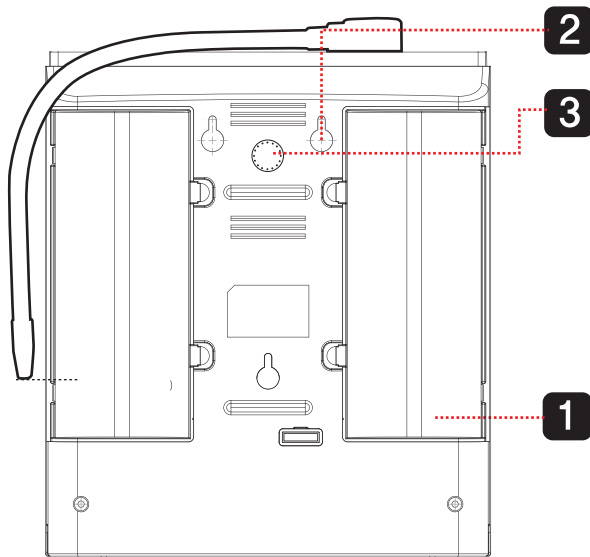
## Main Machine (Front Side)



## LCD Display Panel

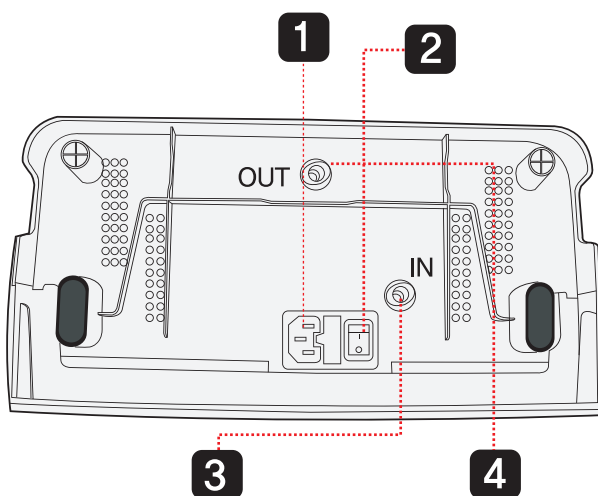


## Main Machine (Back Side)



- 1. Filter Cover
- 2. Wall-mount Hole
- 3. Speaker

## Main Machine (Base)



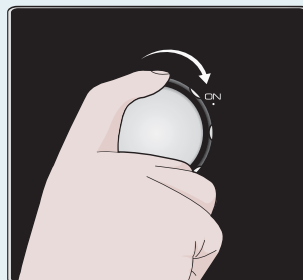
- 1. Water Drain Outlet
- 2. Water Inlet
- 3. Power Socket
- 4. Power Switch



# How To Operate & Use

## Water Dispensing Method

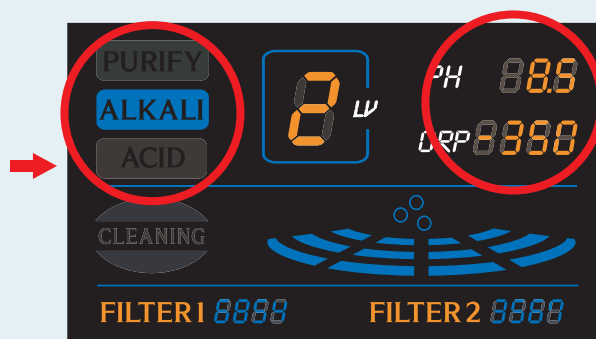
1. Turn the water supply adjustment valve to begin water extraction.



2. When you select the desired water type – alkaline, purified, or acidic – the display ' will change as shown below.

There are 4 levels to be selected from for alkaline water. When the needed level is selected, the LCD panel will display the level's number.

(Please check the pH and ORP that are displayed on the LCD panel)



Purified water is displayed as Level 0. pH and ORP are not displayed on the LCD panel.



There are 2 levels to be selected from for acidic water. When the needed level is selected, the LCD panel will display the level's number.

(Please check the pH and ORP that are displayed on the LCD panel.)



3. Confirm that the water that is being dispensed is indeed the one that you have selected.



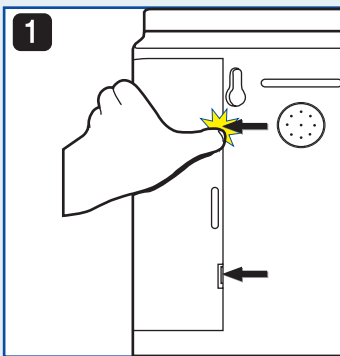
### Caution

Please do not drink the water if the machine is in the process of self-cleaning.

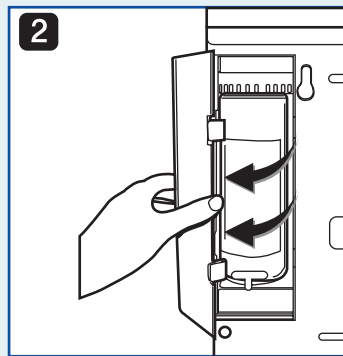
## Filter Replacement Method

### Filter Replacement & Voice Notification Time

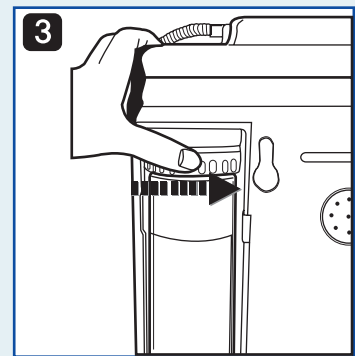
The filter life of the product depends on the usage of water. The automatic display is displayed on the LCD screen display and the number starts at 0 and ends at 9999. When the filter reaches 9900, a voice notification will notify the user to replace their filter. The filter expires at 9999 and will take about 10 days to reach the number. It is recommended that one replace the filter during this period. When the filter's life is over, the number 9999 will flash.



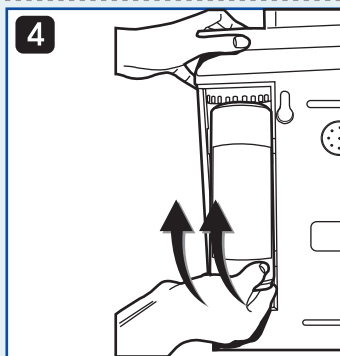
1. Press the top and bottom of the filter cover.



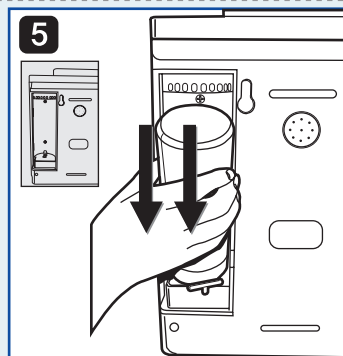
2. Open the filter cover in the direction of the arrows.



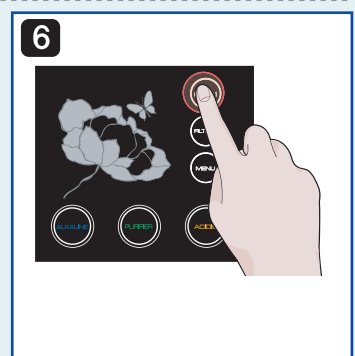
3. Turn the filter's top portion in the direction of the arrow.



4. Lift the filter up and pull it out of the base in the direction of the arrow.

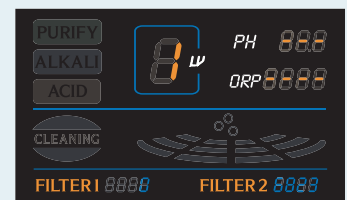


5. Insert the new filter following the direction of the arrows and turn the filter bases 3 times counterclockwise.



6. Reset the appropriate filter that has been replaced.

The Filter 1 and Filter 2 buttons are used to reset the filters after replacement. If Filter 1 was replaced, the Filter 1 button should be firmly pressed and held for about 5 seconds. If Filter 2 was replaced, the Filter 2 button should be firmly pressed and held for about 5 seconds. The replaced filter should display 0000 on the LCD display panel.



#### Caution

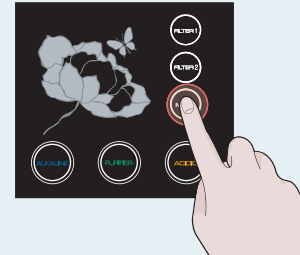
- After replacing the filter, select purified water and run the water for approximately 3–5 minutes before using the machine.
- A filter's life may differ according to the water quality at different locations. It is recommended to change the filter even when it is not time for a replacement, if there is an odor to the water or if there is a flux in the water's flow rate.
- If the machine will not be used for over ten days, it is recommended to unplug the machine and remove the filter. The filter should be sealed and refrigerated.
- Depending on the place or region of use, one may need to install a separate sediment or carbon filter. In particular, if underground water is used, a special filter for underground water must be installed.

## Operating the Manu Button

### How To Operate the Manu Keys

How to Operate the Voice Control Button

Use to adjust the volume. If you press the Manu button on the control panel, the filter life window will display FN1 on the LCD display panel. When reducing volume, firmly press Filter 1 and when increasing volume, firmly press Filter 2. Each press of the button will change the volume based on a range of 5. After selection, press and hold the Manu button once again and this will set the selected volume.



The Voice Notifications are as follows. Please refer to them.

#### Drain Button Operation

- Self-cleansing in progress. Please wait.

#### Alkaline Water Selection

- Alkaline Level 1 selected.
- Alkaline Level 2 selected.
- Alkaline Level 3 selected.
- Alkaline Level 4 selected.

#### Acidic Water Selection

- Acidic Level 1 selected.
- Acidic Level 2 selected.

#### Purified Water Selection

- Purified water selected.

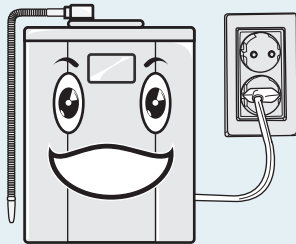
## Precautions to Take Before Installation



### Caution

Improper handling may cause either financial damage or physical damage

This product was built exclusively for AC220V. Please check voltage before plugging in the power cord.



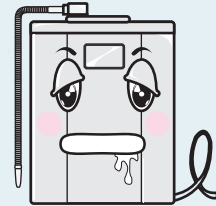
■ If you would like to use AC110V, please contact the manufacturer/retailer.

Do not place the product in a location facing direct sunlight or with temperatures below 32 degrees Fahrenheit.



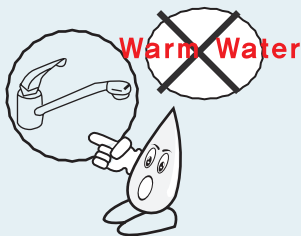
■ There is a chance that the case may get deformed or freeze.

The acidic water line hose should be placed lower than the main product.



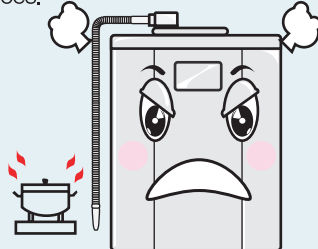
■ If the length of the acidic water line hose is too long or if it placed higher than the main product, it can affect the production of ionized water and change the taste of the water.

One must connect the product to the cold water pipe.



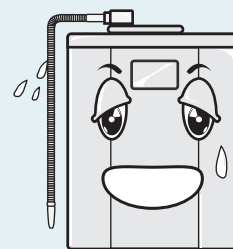
■ If connected to warm water, it may damage the purifying filter and the electrolytic cell

Avoid places where the product may come into contact with direct heating sources.



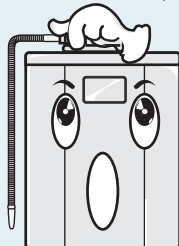
■ There is a chance that the case may get deformed and cause water leakage.

Do not remodel the machine arbitrarily.



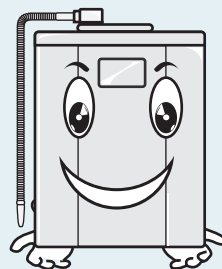
■ This may cause machinery malfunction or lead to safety issues.

Do not use the water passage hose as a handle to move the product.

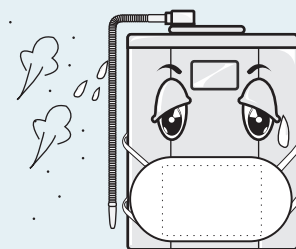


■ There is a possibility of the part separating from the machine and damaging the machine as well as a chance of bodily injury.

One must hold the base when moving the product.



Do not place in a place that is humid or dusty

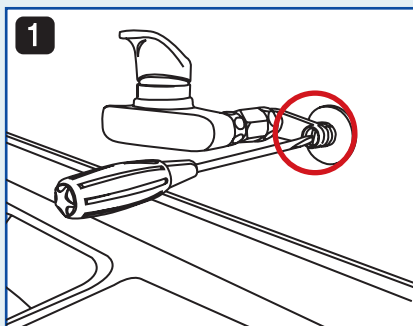


■ This greatly reduces chances of malfunction and safety hazards.

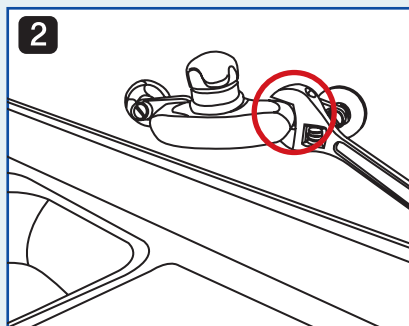
- The machine should be placed on a horizontally flat and stable area. Do not install the machine on an unstable or shaky surface. If the product is dropped or hit, it could lead to malfunction.
- If the product is used at a cold place in the winter, there is a chance that the purifying filter will freeze. It is recommended that the filter be taken out when the product is not in use in order to avoid the purifying filter from freezing.
- ※ If the product is dropped, this may cause internal malfunctions or cause electric shock. Please consult the manufacturer/retailer where the product was purchased.

# How to Install the Main Machine

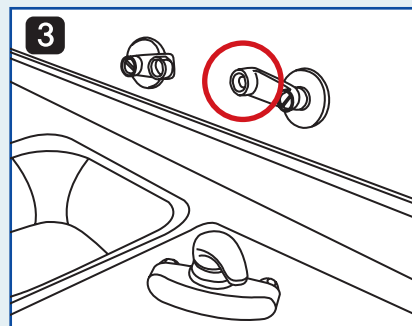
## How to Install Above the Sink



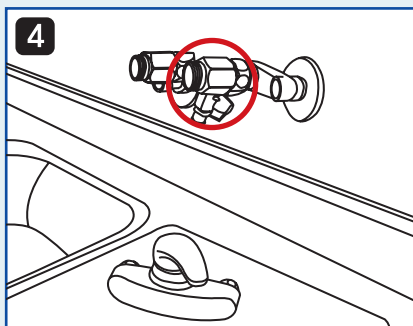
1. Turn off the main water valve for the cold water..



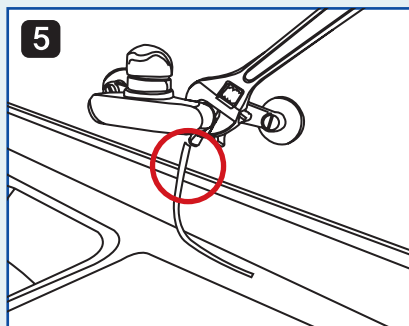
2. Disconnect the water faucet from the water pipe.



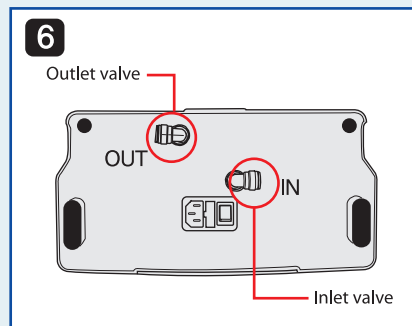
3. Clean the disassembled drain thoroughly.  
(Failing to do so can cause the product to malfunction.)



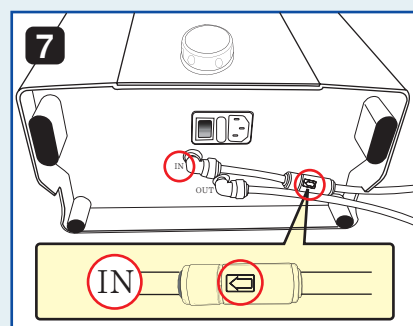
4. Connect the adapter to the disassembled water pipe. ( The cold and hot water lines must both be connected to the adapter at the same time. Connect the cold water line to the part with the handle.)



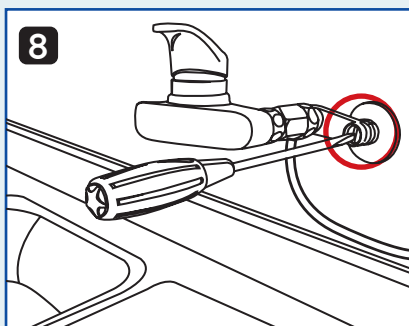
5. After connecting one end of the adapter to faucet, connect the remaining portion of the valve to the product's water connection hose line.  
( Fasten the adapter to prevent water leakage.)



6. Connect the corresponding hoses to the water inlet and drain outlet, accordingly.

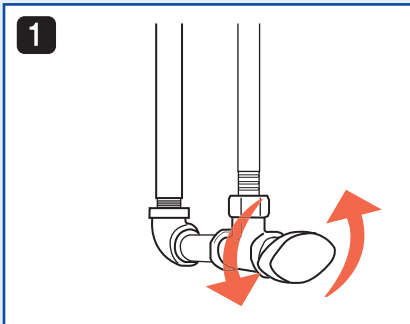


7. Please connect the high turbidity filter to the main water line beneath the main unit.  
( Please connect it into the main water inlet in the direction of the arrows.)

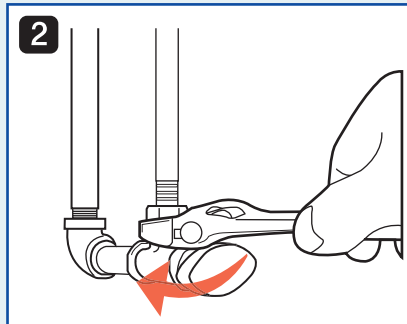


8. Turn on the main water valve and the adapter valve. When the ON/OFF button on the machine is pressed, water will become available to the machine and the machine will begin its function.

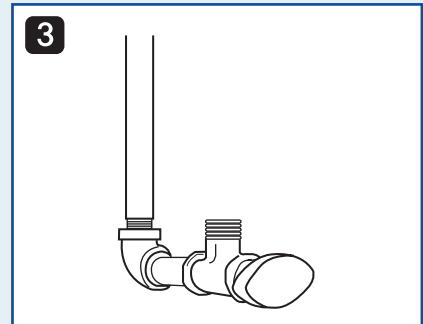
## How to Install Under the Sink



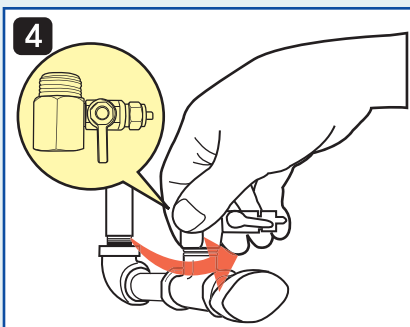
1. Find the tap water valve beneath the sink.



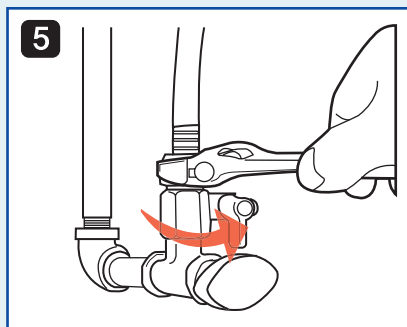
2. Unfasten the cold water line from the tap water valve (as shown in the illustration.)  
(If connected to hot water, it may lead the machine to malfunction.)



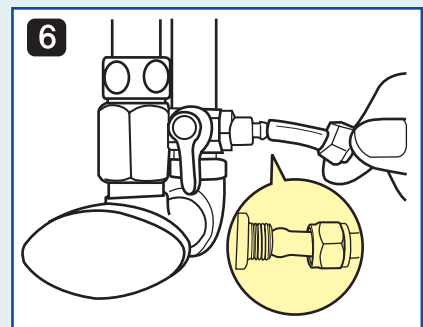
3. Please remove completely as shown in the illustration.



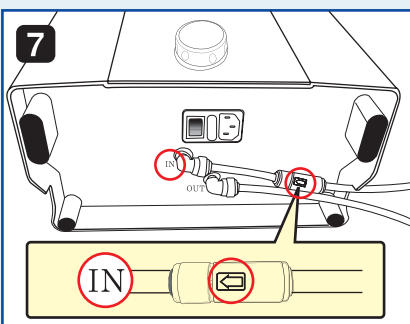
4. Connect the adapter to the disassembled cold water line.



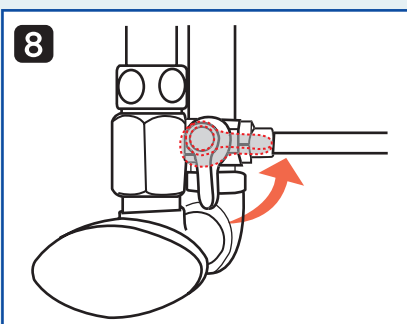
5. Use a spanner to completely fasten the valve.  
(If the valve is not fastened completely, this could lead to water leakage.)



6. Please connect the remaining portion of the valve to the product's water connection hose line.  
(If connected to hot water, it may lead the machine to malfunction.)

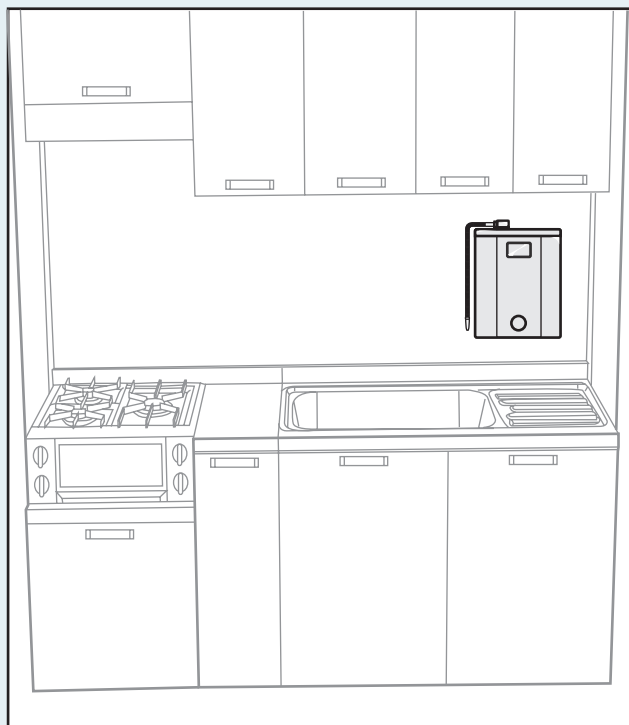


7. Please connect the high turbidity filter to the main water line beneath the main unit.  
(Please connect it into the main water inlet in the direction of the arrows.)

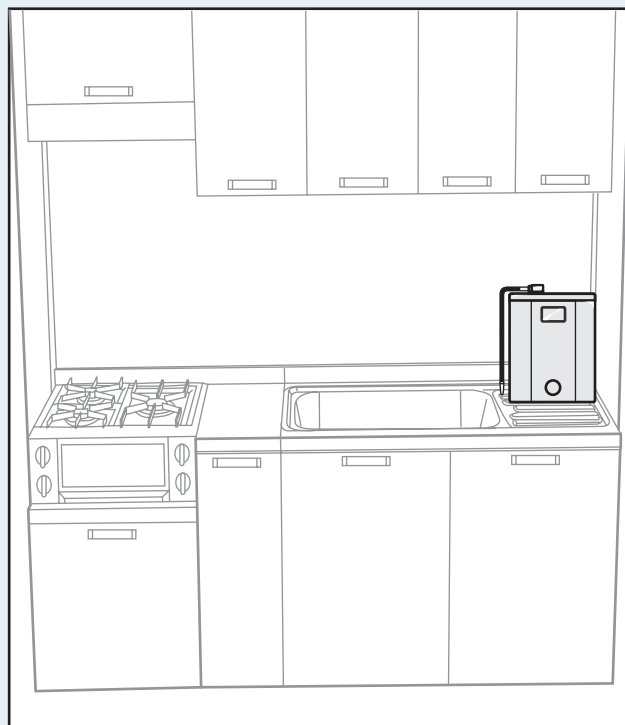


8. Turn on the main water valve and the adapter valve. When the ON/OFF button on the machine is pressed, water will become available to the machine and the machine will begin its function.

8. Place the machine at your convenience.



**Wall-Mounting**



**Above the Sink**



**Caution**

Improper handling may cause either financial damage or physical damage

- If the valve is not fastened completely during installation, it could lead to water leakage. When installing, the installer and user must make assurance doubly sure of the connection. In particular, the user must make sure that there are no leaks after installation before beginning use of the product. If a leak were to happen due to faulty installation, the user will not be compensated for damages.
- Since one must drill a hole for the tubing hose to go through the sink, please think carefully before installation.
- If a water leakage is found, please fasten the adapter shut.

※ It is recommended that a specialized technician install the product. If the consumer is to install the product themselves, they are unable to receive compensation in case of malfunction due to installation problems.



# Frequently Asked Questions

## Before Assuming It's a Malfunction...

- Before requesting repairs please check the following.  
The user should not disassemble and repair the machine.

Symptoms	Things to Check	Possible Solutions
The power light is not on.	Is the power plug plugged in properly into the outlet?	Plug in the power plug into the outlet properly.
The switch does not seem to work.	<ul style="list-style-type: none"> <li>• Is the power plug plugged in properly into the outlet?</li> <li>• Is the fuse on the backside disconnected?</li> </ul>	<ul style="list-style-type: none"> <li>• Plug in the power plug into the outlet properly.</li> <li>• If the fuse (220V 8A) is defective, replace it.</li> </ul>
Little water comes out, water does not come out, or the equipment suddenly stops working.	<ul style="list-style-type: none"> <li>• Is the valve for the water inlet closed?</li> <li>• Is the water hose bent or folded?</li> <li>• Has the water supply been cut off or are the water pipes frozen?</li> <li>• Are there any obstructions in the filter?</li> </ul>	<ul style="list-style-type: none"> <li>• Open the water valve.</li> <li>• Connect the hose properly.</li> <li>• Please unfold the bent or folded portion of the water hose.</li> <li>• Stop operating the machine.</li> <li>• Wait until water comes out.</li> <li>• Replace the filter.</li> </ul>
Water is leaking from the hose connecting portion.	Is the hose connection loose or disconnected?	Connect the hose properly. If the problem is not resolved, unplug the electric plug, close the main water valve and promptly contact the Customer Service Center.
The filter replacement warning is on even after filter replacement.	Have you reset the filter?	Reset the corresponding filter (1 or 2) by firmly pressing the filter button.
The machine makes an abnormal sound.		Stop operating the machine and contact the Customer Service Center.
The machine stops mid-production of alkaline or acidic water and the product powers off.	Is the flow rate too low?	<ul style="list-style-type: none"> <li>• Open the water valve completely.</li> <li>• Replace filters. If the problem is not resolved, unplug the electric plug, close the main water valve and promptly contact the Customer Service Center.</li> </ul>



## Before Assuming that the Machine is Malfunctioning...

Symptoms	Things to Check	Possible Solutions
The level of concentration of alkaline water is low.	<ul style="list-style-type: none"> <li>Is the alkaline water's concentration level set to a lower setting?</li> <li>Is the water overflowing?</li> <li>Is there an underproduction of acidic water?</li> </ul>	<ul style="list-style-type: none"> <li>Raise the concentration level.</li> <li>Reduce the main water valve's flow rate.</li> <li>If the problem is not resolved, unplug the electric plug, close the main water valve and promptly contact the Customer Service Center.</li> </ul>
The water has a peculiar odor and tastes different.	<ul style="list-style-type: none"> <li>Was the product unused for a prolonged period?</li> <li>Is the acidic water drain hose immersed in water?</li> </ul>	<ul style="list-style-type: none"> <li>Let the water run through the water ionizer for over 3 minutes. If the problem persists, replace the filter.</li> <li>Remove the acidic water drain hose from the water.</li> </ul>
When alkaline ionized water is put in a cup, white bubbles arise.		<ul style="list-style-type: none"> <li>This occurs quite frequently after installation or after filter replacement. This does not affect the use of the product.</li> <li>This phenomenon occurs because alkaline ionized water has very small water particles, created during ion formation, and because it has high contents of dissolved hydrogen.</li> </ul>
If alkaline ionized water is placed in a container, the bottom of the container can turn white with precipitated matter.		<ul style="list-style-type: none"> <li>This phenomenon occurs because alkaline ionized water has high contents of calcium mineral components. In particular, when there are high levels of carboxyl (<math>\text{CO}_3</math>), carbon combines with carboxyl and extracts calcium carbonate (<math>\text{CaCO}_3</math>). This is definite proof that the process of electrolysis is indeed occurring. Although it safe to ingest, please clean the container.</li> </ul> <p>The method for cleaning is as follows: If one spoon of vinegar is diluted in the container and left to sit for about an hour, then shaken, it will remove the precipitated calcium carbonate.</p>

## Product Specifications

<b>Product Type</b>		Water Ionizer
<b>Product Name</b>		Dion Family
<b>Power Supply Voltage</b>		AC 220V / 60 Hz
<b>Water Supply Method</b>		Direct Connection to Tap
<b>Main Body</b>	<b>Measurements</b>	11.33 X 13.94 X 5.67 (W X H X D) inches
	<b>Weight</b>	Approximately 11.02 lbs
<b>Feasible Water Pressure</b>		0.7 – 5.0 kgf / cm <sup>2</sup>
<b>Feasible Water Temperature</b>		41° F – 86° F
<b>Protective Equipment</b>		Built-in Temperature Sensor
<b>Electrolytic Device</b>	<b>Method of Electrolysis</b>	Continuous Electrolysis Method
	<b>Water Yield Capacity</b>	2.0ℓ / min (When the Water Pressure is 2 kgf / cm <sup>2</sup> ) "Including alkaline ionized and acidic ionized water"
	<b>Levels of Electrolysis</b>	Alkaline Water: 4 levels / Acidic Water: 2 levels / Purified
	<b>Method of Electrolytic Cleaning</b>	Automatic Cleansing Method (Pre-cleansing Method)
	<b>Electrode</b>	Platinum Titanium Electrode
<b>Purifying Device</b>	<b>Filter Life</b>	Primary Filter: 3,600ℓ Secondary Filter: 7,200ℓ
	<b>Life Display</b>	Filter Life Displayed on visually on LCD panel and voice alerts
	<b>Filter Material</b>	High Density PE-Surface Filter, High End Refined Filter, Activated Carbon containing Silver
<b>Product's Main Purpose</b>		Produce alkaline water through electrolysis

## Product Warranty



■ Type of Product: .....

■ Name of Product: .....

■ Serial No: .....

■ Purchase Date: .....

■ Purchase Place: .....

■ Customer .....

· Address: .....

· Name: .....

· Phone: .....

· Address: .....

· Company Name: .....

· Phone: .....

### 2-year Warranty

This product has passed a through quality control and inspection and repair and replacement, etc. shall be offered within the warranty period in accordance with Regulations of Notification of Consumer Damage Compensation by Economy Planning Board.

### ■ Warranty Regulations

1. Warranty shall be provided for a period of two (2) years with the information stated in the warranty of this product.
2. Warranty period shall commence on the purchase date so please write the purchase date on your warranty.  
(In case that the date of purchase is not verified, charge shall be made.)
3. Warranty shall not be reissued so please keep it with a user manual.
4. Liability
  - A. Initially the dealer from whom you originally purchased the product shall be responsible.
  - B. In case of bankruptcy or closure of business where you purchased, the manufacturer shall bear responsibility for this.
5. "Warranty Exceptions" shall be applied for the following articles below and charge shall be made.
  - A. In case that the warranty period is expired,
  - B. In case of the breakdown of the product due to natural disasters,
  - C. In case the product is broken down caused by not complying with a user manual,
  - D. In case that external shock is occurred to the product such as disassembly, physical shock, and so on,
  - E. In case that the life of consumable parts ends,
  - F. In case the warranty is not presented,

### ■ A/S Application

For A/S, please contact the office where you purchased (or headquarters) or Customer Service with the warranty showing the date of purchase.

WATER IONIZER  
**DION FAMILY**

**Manufacturer:**

**Allsbon Korea Co.,Ltd.**

#103-603, 364, Bucheon Techno Park, Samjeong-dong, Ojeong-gu, Bucheon-si, Gyeonggi-do, Korea  
Tel. 82.2.597.0374 Fax. 82.2.596.7272

***ALLS BON***