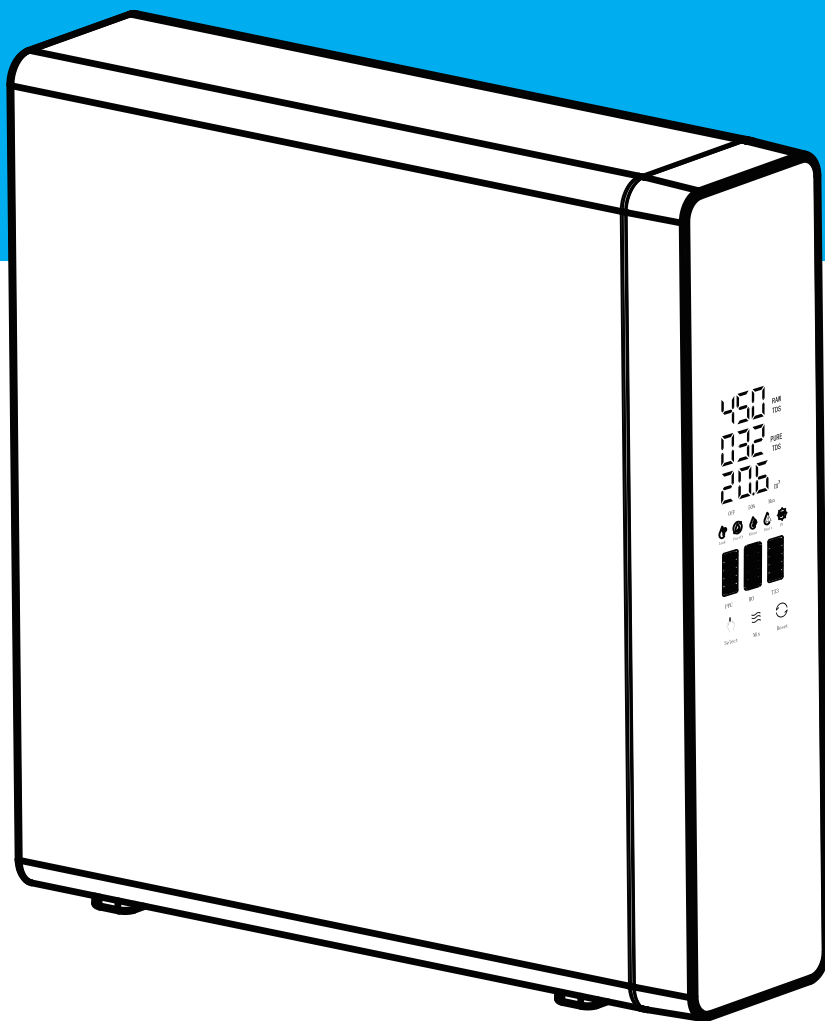


# SLIM

MANUAL



# SLIM

English

---

Congratulations.

You have acquired an excellent purifying equipment, for treating and improving your drinking water. This equipment incorporates direct flow technology, which is highly respectful with the environment.

# USER MANUAL

## INDEX

1. CONTENTS OF THE PACKAGING	01
2. WARNINGS	02
3. PRODUCT MODEL& SPECIFICATIONS	04
4. TECHNICAL DRAWINGS	05
5. PRODUCT INTRODUCTION	06
6. INSTALLATION AND MAINTENANCE	06-07
7. PROBLEM SOLVING	14

# 1. CONTENTS OF THE PACKAGING

PIECE	UNIT	PIECE	UNIT
Water Purifier	1 pc	1/4" PE tube	3 m
Instructions Manual	1 pc	3/8" PE tube	3 m
Inlet Water T valve	1 set	Faucet	1 set
Tape	1 Roll	Adaptor 220-24vdcsa	1pc
Pipe Extraction Tool	1pc	1/4" blue clip	9 pcs
1/4" Quick connecting	2pcs	3/8" blue clip	6 pcs
1/4" O Ring	3pcs	3/8" Plastic fitting	2 pcs
3/8" O Ring	2pcs	PP+C multi filter	1pc
1/4" Plastic fitting	3pcs	Osmosis membrane	1pc
Leak sensor	1 pc	Filter T33 Alkalinizer	1 pc
Faucet plate	1 pc	Screws	3 pcs
Expansion rubber	3 pcs		

**!** PLEASE CHECK THAT THE ACCESSORIES ARE INCLUDED PRIOR TO INSTALLATION.







## 2. NOTICE



**ATTENTION:** Following contents are all about the safety, please obey them strictly. The precautions in this manual are only for the correct use of this product. The notice explains the extent of danger, warnings, and possible accidents.

1. Do not use other accessories which are not permitted by the manufacturer to avoid any damage of machine.
2. Please check the machine and the accessories are complete before installation.
3. Children can only use the product under adult supervision
4. If malfunctions appear, please cut off the power, close the inlet water valve immediately and do not keep the machine in working mode.
5. This machine should only be repaired in authorized service centres.
6. The water capacity through the RO membrane will be affected by the water quality, pressure and temperature. If the water quality cannot meet the normal standard, low water pressure or when temperature is below 25°C, the flow rate will be slower than regular.






## 2. WARNINGS

	PROHIBITED	Any content with this mark is an act that must be prohibited. Otherwise, it may cause damage to the product or endanger the safety of the user.	
	WARNING	Any content with this mark must be operated in strict accordance with the requirements, otherwise it may cause damage to the product or endanger the safety of the user.	
	ATTENTION	Any content with this mark is the part that the user must pay attention to, otherwise the product may be damaged or cause other damage due to improper operation.	
	Avoid exposure in the sun or outside		Do not install it in places below 4°C
			Do not place near flammable or explosive materials

### WARNING

	When the machine indicates fault, cut off the water source and power supply	Avoid use by children 	Call the technician service to ask for help 
---	---	---	---

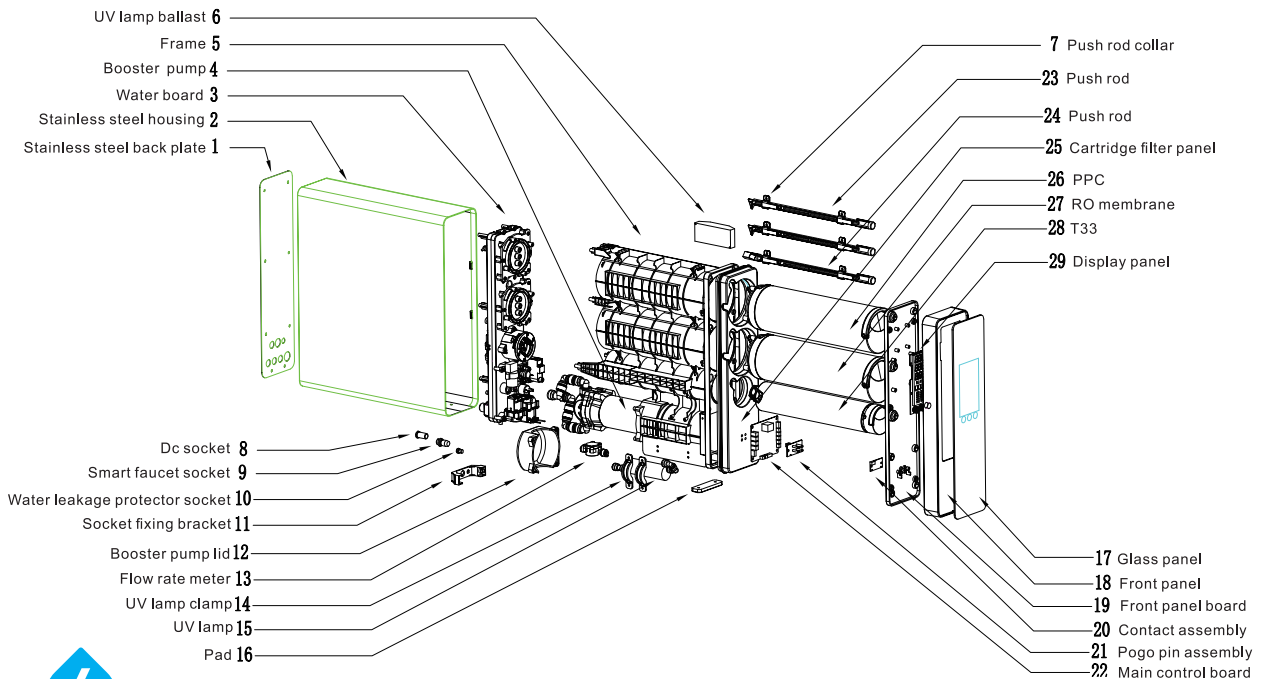
### ATTENTION

	Do not disassemble the machine without guidance of a professional		Please use the machine at environmental temperature 4-40° C		Turn off the water source and the power supply if you don't use it for 24 hours
	Use only original manufactured accessories to ensure the proper functioning of the machine		Only a professional can repair and maintain the system and the machine.		

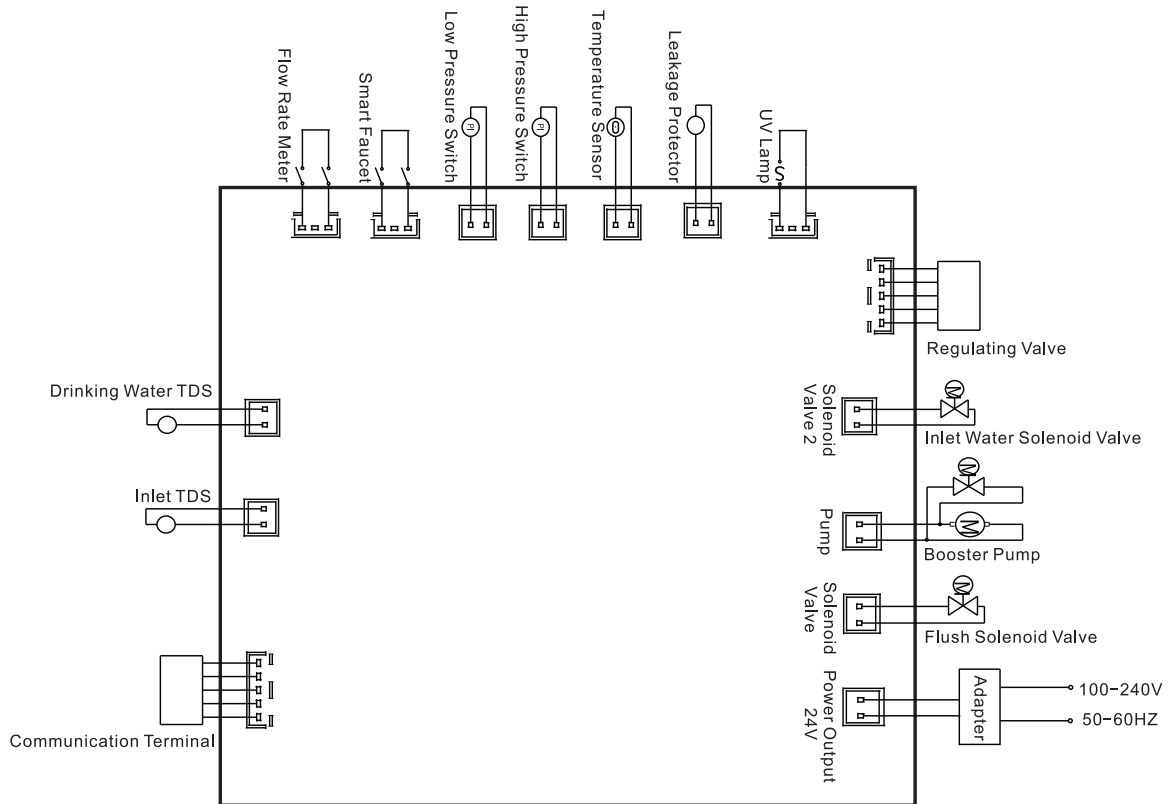
# 3. PRODUCT MODEL & SPECIFICATIONS

Product	Water purifier by reverse osmosis
Item Number	SLIM
Rated Voltage/Frequency	100V-240V V-50 / 60Hz
Rated Power	80W
Water Pressure	0,1-0,4MPa
Purified water rate	1,0 l - 1,3 L/min
Drinking water rate	2,1L/min
Rated capacity of drinking water	4000L
Applicable environment Temperature	4-40°C, ambient humidity below 90%
Product Size	4443 * 132 * 356mm

## PRODUCT SPARE PARTS

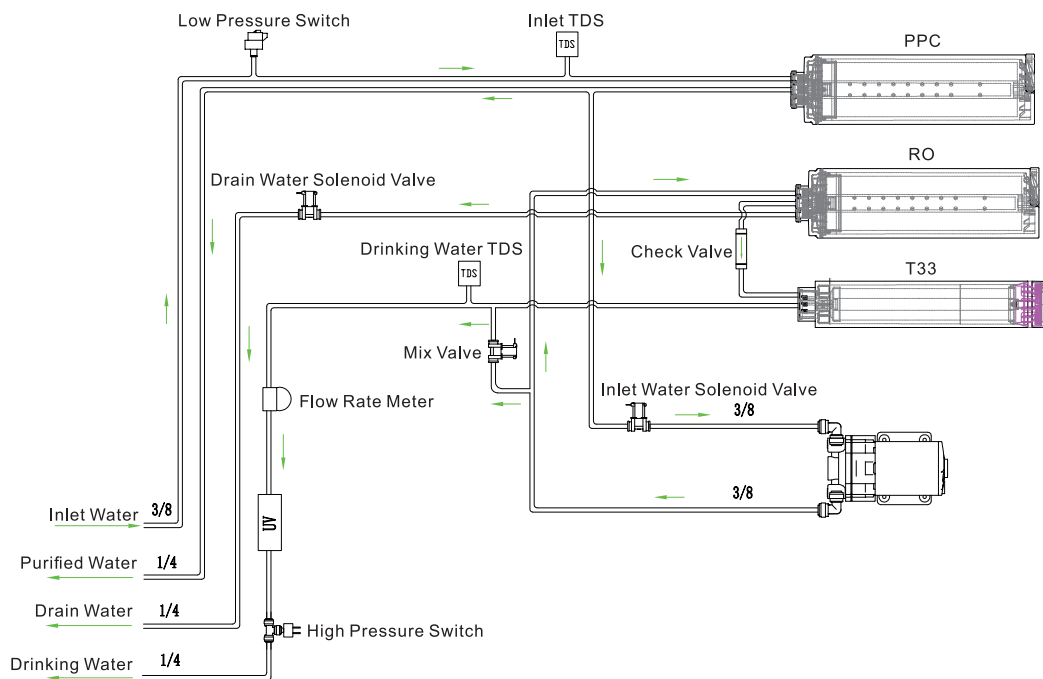


## ELECTRIC DIAGRAM



English

## TECHNICAL PRINCIPLE





## 5. PRODUCT INTRODUCTION

### FUNCTION

**Stage 1 PP + Carbon Filter:** Removes dirt, corrosion, sediment, sand and other physical particles to protect the reverse osmosis membrane

**Stage 2 RO Membrane:** Reverse osmosis membrane with a filtration precision of 0.0001mm removes bacteria, viruses and other harmful substances, heavy metals and pesticide residues from the water.

**Stage 3 T33 Filter:** Removes volatile organic compounds and odor from water, and improves water taste and alkalizes.

## 6. INSTALLATION AND MAINTENANCE

### INSTALLATION

Product installation and commissioning: This machine should be installed by professional personnel. Please check that the accessories in the package are complete before installation.

#### 1, Requirements of Installation Conditions

1.1 The machine is equipped with a pressure boost component and can be installed on the municipal water pipeline.

1.2 Please use the right adapter for 220v or 110v voltage.

1.3 Make sure the installation place is clean, not directly under the sun, no flammable or explosive materials, no electrical equipment, not in a humid place.



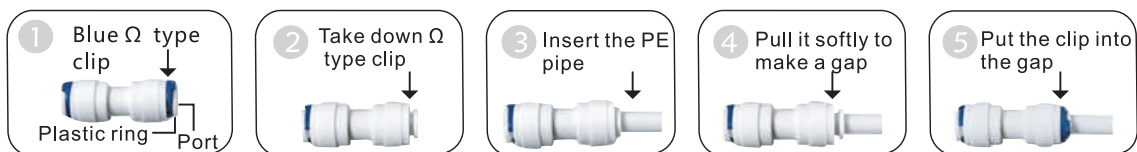
**Attention:** Please pay attention to safety when drilling and make sure there is no hidden water pipe, electric wire and gas tube.

## 2. QUICK CONNECTOR INSTALLATION

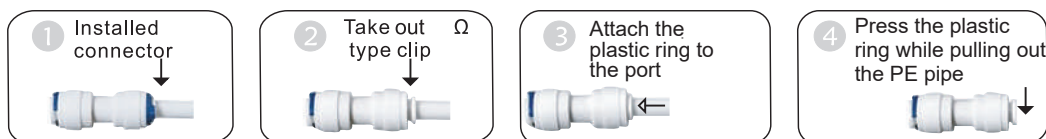
2.1 Quick connection ports are adopted at the inlet and outlet of the machine. Quick connector is a port that can be connected quickly and firmly without tools. First, pull the type  $\Omega$  clip on the port, push the movable plastic ring into the port, make it attached to the port to move the plastic plug or PE pipe. Insert the PE tube to the end of the port, then pull slightly to make a gap between the movable plastic ring and the port. Finally insert the type  $\Omega$  clip into the space. When you pull out the PE tube from the quick connector, please pull out the Type  $\Omega$  Clip first, push the movable plastic ring towards the port to make it fixed to the port, then you could pull out the PE tube.

### 2.2. PE pipe connection and quick connector.

Connection: Detach the type clip, cut the PE tube until it is smooth, and insert it into the quick connector. Then pull slightly to check that the PE tube has entered the O-ring of the quick connector, and finally insert the clip.



Divide: Take out  $\Omega$  type clip, attach the plastic ring to the port, pull out the PE pipe.

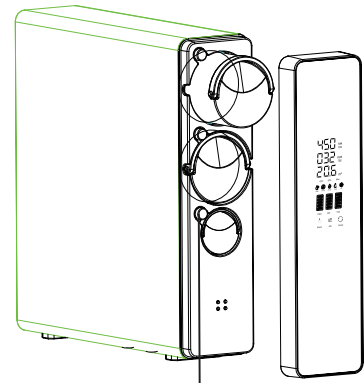


### 3. Cartridge installation

3.1 Remove the filter element cover and press the cartridge change button, and the corresponding filter will come out.

3.2 Insert the new filter in the corresponding position and, after hearing a click, pull the handle to check if it is fixed in place.

3.3 After installation, put the cover back on the machine.



Cartridge change button

### 4. Place of installation

Place the machine on a flat and stable surface.

### 5. INSTALLATION OF WATERWAY

5.1 Connect the T-valve to the water supply

Clean the connection area and close the water supply valve first, remove the faucet or angle valve, then connect the T-valve, finally reconnect the faucet and angle valve. (Attention: The screw thread connection should be sealed with Teflon tape or O-ring to prevent leakage)

Connect to T-valve: Wrap the appropriate teflon tape on the connection with the water pipe, and then screw it onto the water pipe connector (see figure 1)

5.2 Connect the water supply to the machine (FEED)

Cut a suitable length of PE pipe (3/8") and attach one end of the PE pipe to the T-valve (see Fig. 2) and then screw the nut

The other end of the PE tube connects to the "FEED" inlet connection port.

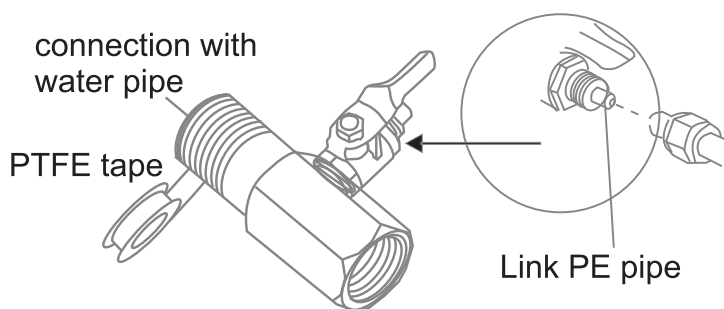


Fig. 1

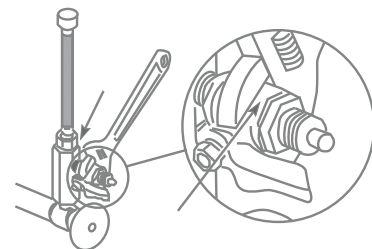
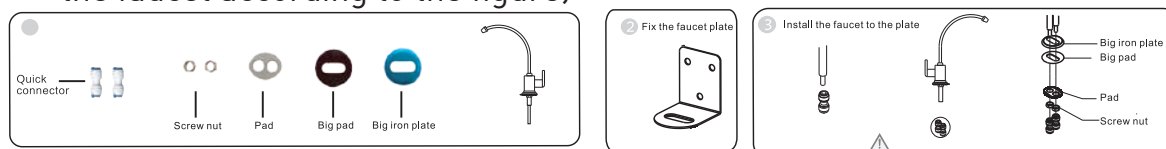


Fig. 2

### 5.3 Grid installation

Drill a 20mm hole at the intended installation location and fix the tap. (Fix the faucet according to the figure)



### 5.5 Connect the drinking water outlet (DRINK)

Connect the 1/4" connector to one side of the faucet, cut the 1/4" PE tube to a suitable length, insert one side into the quick connector, and connect the other side to the "DRINK" port of the machine .

### 5.6 Connect the waste water outlet (DRAIN)

Take a suitable length of 1/4" PE tubing to connect to the "DRAIN" port on the machine. And connect the other side to the drain line and fix the PE pipe to prevent dripping.

### 5.7 Connect the leak sensor

After all the PE pipe installed, insert the leakage sensor directly and place it next to the machine, if it leaks, the leakage sensor will detect (wet), the signal symbol is displayed on the screen and an alarm sounds for 6 seconds, the machine will stop working. After the leak is fixed and the leak sensor is dry, reconnect the power to start the machine again

#### ! ATTENTION :

- 1 If there is no water coming out of the tap, check the power supply.
- 2 Wash the filter cartridges according to instructions 5.7. Before first use.

#### GENERAL INSTRUCTIONS.

When you use it for the first time, open the tap and the water inlet valve. When water comes out of the tap, turn off the tap for 30 minutes and check for leaks. If there are no leaks, you can use the machine as normal.

In normal user mode, keep power on, open and close the faucet.

When using the machine after a long period of inactivity, open the tap and empty the cartridges following the instructions.

## OPERATION

When connecting the power supply, the machine beeps and enters rinse mode.

### 1.RINSING

- 1) Auto rinse: Every time you connect the power supply, the machine will rinse 30 seconds automatically. If the machine is not used for more than 24 hours, it will rinse 30 seconds automatically.
- 2) If the water purification time is more than 20 minutes, the machine will rinse 15 seconds automatically
- 3) Press "Select" button, the machine will start rinsing 30 seconds and then enter working mode. If in washing, press "Select" again, it will stop.
- 4) When rinsed, it will be indicated on the front panel. (RINSE)

### 2.PURIFY

Open the water tap and start filtering, the water inlet solenoid valve and booster pump start to work, this is indicated on the front panel "PURIFY". The TDS reading will be displayed after 15 seconds of operation.

### 3.LEAKS

When there are leaks, the "Leak" indicator will light up and flash. Meanwhile it will buzz 10 times. After solving the problem, reconnect the power and restart the machine.

### 4.FAULT

- 1)When filtering or rinsing continuously for 20 min, the "FAULT" indicator will light (FAULT) and flash. Meanwhile, it emits 10 beeps until the problem is solved, disconnect and reconnect the power supply.
- 2)When the low pressure switch is disconnected, it is considered that there is no water inlet. At this time, the leakage indicator will light up and flash. Meanwhile, it beeps, and then the sound will cease but the indicator will keep flashing.

### 5.CARTRIDGE LIFE

Filter life time is indicated on the front panel. With time and use the bars will go down, when the last bar is reached, the corresponding indicator turns red and emits 10 beeps.

## 6. HOW TO REPLACE FILTERS

Press "RESET" button for 3 seconds until you hear a sound. You are in replacement mode now. To switch between cartridges, push "SELECT" once. Select the cartridge to be changed and press "RESET" button for 3 seconds until you hear a sound.

### 6. Replace Cartridge

Press "Reset" button for 3 seconds until you hear a sound. You are in replacement mode now. To switch between cartridges, push "Select" once. Select the cartridge to be changed and press "Reset" button for 3 seconds until you hear a sound.

## 7. UV

When filtering, the UV lamp starts to work, and the 'UV' indicator lights up. If the UV lamp fault is detected, the indicator flashes meanwhile buzzing 5 times.

## 8. Flow Rate Meter

Shown as accumulated water purification, converted into square meters (m<sup>3</sup>). Press and hold the 'Select' and 'Reset' button at the same time for 5 seconds to clear the value and restart the calculation.

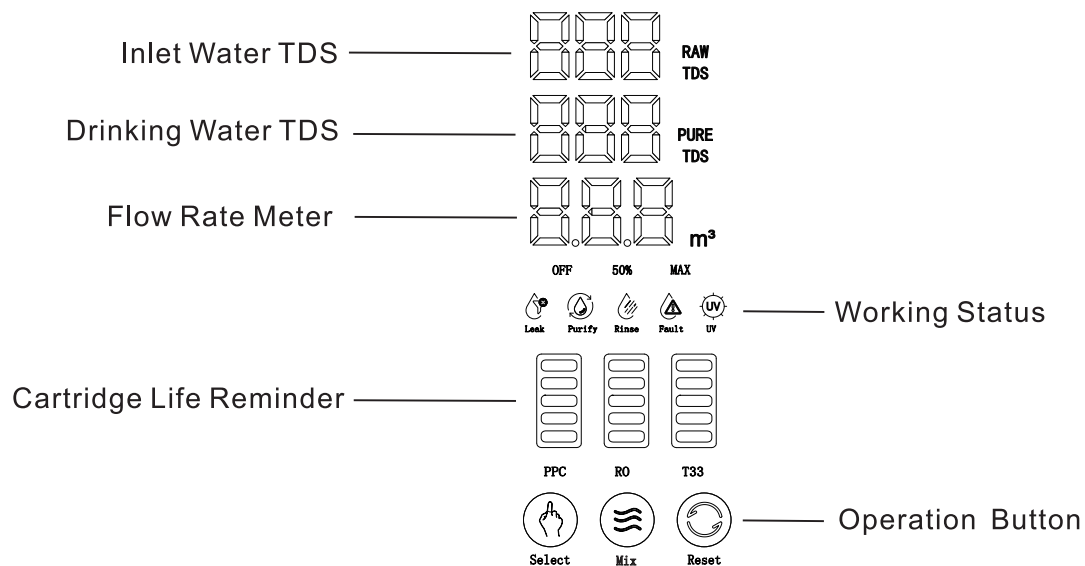
## 9. Mix Valve

There are 3 gears in total. Press the 'MIX' button to enter the mode of selecting the mixed ratio. At the same time the 'OFF' indicator is on, press the 'MIX' button again '50%' indicator on, the 'OFF' indicator off. And then press the 'MIX' button, 'Max' indicator on, '50%' indicator off. The buzzer will beep once when the button is pressed.

## 10. Smart Faucet

When filtering water normally, if the TDS value over 200, smart faucet light turns to red, if TDS value is lower than 200, light blue on. When the cartridge life expires, the smart faucet light flashes red.

## 11. SCREEN



## INSTALLATION & MAINTENANCE

### Cartridge replacement time :

The cartridge replacement time is according to the quality and use of local water. The replacement times are for reference only.

Cartucho	P P+ Filtro Carbón	RO Membrana	FiltroP P+ Filtro	UV Led
TIEMPO DE VIDA	12 meses	24 meses	12 meses	48 Meses



## ATTENTION

1. As in some areas the inlet water quality is not so good, please pay attention to the 1 st stage cartridge and replace it in time.
2. When the TDS of the purified water increases rapidly, it is necessary to change the reverse osmosis membrane soon.
3. The T33 is to improve the taste of drinking water, if the taste of the water becomes bad, or when the cartridge life is over, please replace the T33 cartridge

**Change cartridges regularly to maintain effective and efficient filtration.**

- 1 Close the water inlet, disconnect the transformer and open the faucet until the machine stops working
- 2 Remove the cover and set it aside. Remove and install the cartridges as described.

## INSTALATION AND MAINTENANCE



### ATTENTION:

1. Replace the cartridge in turn and make sure it is in the correct position.
2. Cartridge life will be different according to area, water quality, season and working time.

### MAINTAIN THE MACHINE

- When cleaning the machine, do not use soap, detergent, and strong volatile solvents like thinners, gasoline, and alcohol, it will cause the cracks and color change.



# 7.COMMON MALFUNCTION

COMMON MALFUNCTION	POSSIBLE REASONS	SOLUTIONS
<b>No water or water flow rate is too low</b>	PE pipe is bent	Make PE pipe smooth
	Inlet water T valve closed	Open the inlet water T valve
	Source water is shut down	Waiting for the water source supply
	PPC filter is blocked	Replace the cartridge
	Original water pressure is low	Add pressure increase treatment
	The temperature is low	Increase the temperature
<b>Machine does not work</b>	Adaptor losing efficacy	Check the water source. If there is water then turn off electricity and start again
	Machine short of water	Replace the adapter
	Electrical failure	Check the power supply
<b>Water Taste is abnormal</b>	Don't used for a long time	Rinse the cartridge for 5 minutes. if it doesn't solve the problem, replace the cartridges
	Poor water quality	Check the quality of the feed water
	Not replaced the cartridge for a long time	Replace the cartridges
<b>Noises during machine operation</b>	Power and tension don't coincide	Contact profesional staff
	Water flow is to low	Increase the capacity of water
	The adapter ir damaged	Call SAT
	Failure in the water pump	Call SAT