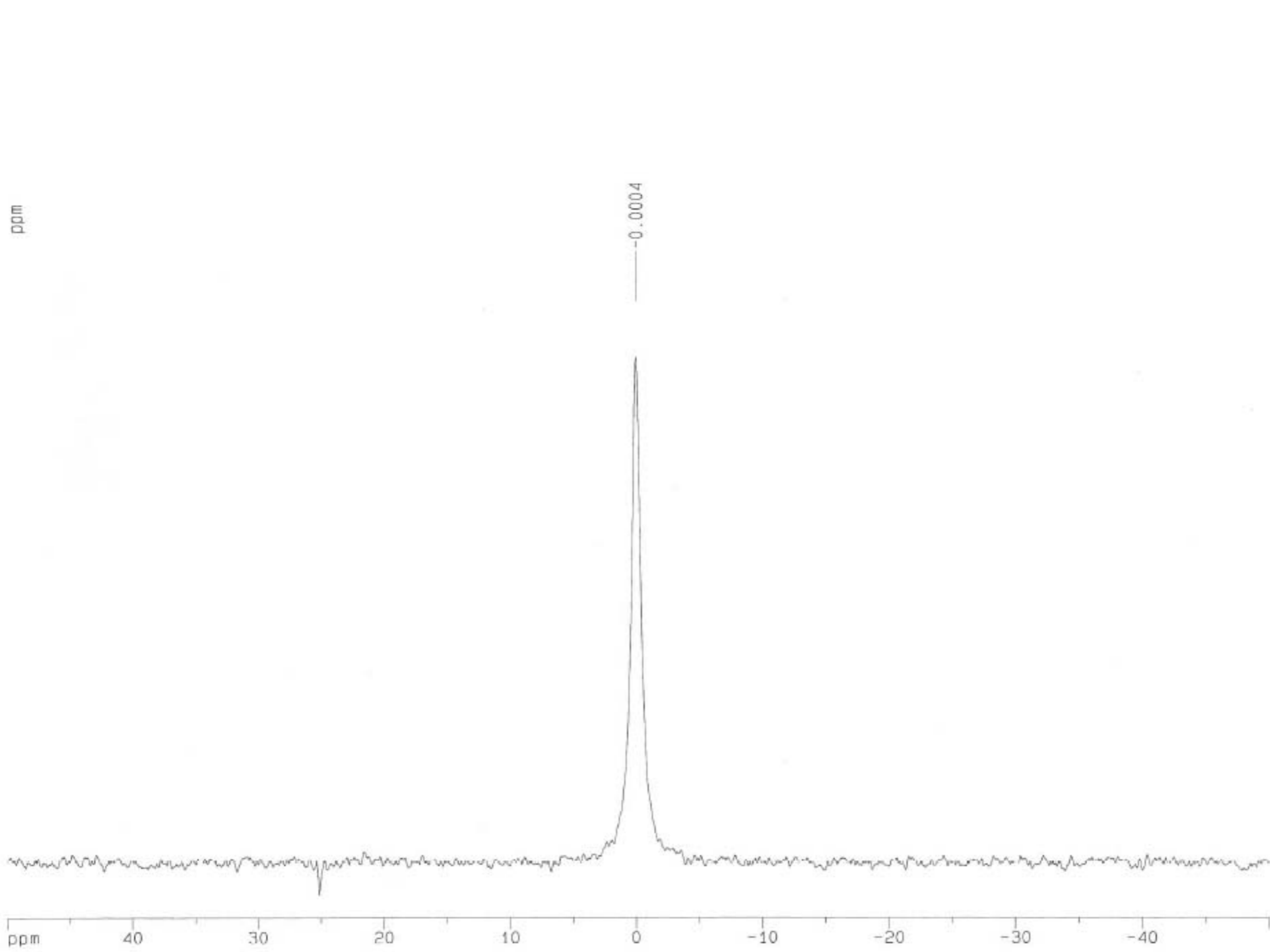


A/017 (Half width : 55.04Hz)



Current Data Parameters
NAME oct24-at-ijh
EXPNO 1
PROCNO 1

F2 - Acquisition Parameters
Date_ 20061024
Time 13.09
INSTRUM spect
PROBHD 5 mm BBI 1H/2H
PULPROG zg
TD 65536
SOLVENT D2O
NS 512
DS 0
SWH 13550.136 Hz
FIDRES 0.206759 Hz
AQ 2.4183652 sec
RG 8
DW 36.900 usec
DE 6.00 usec
TE 300.0 K
D1 0.50000000 sec

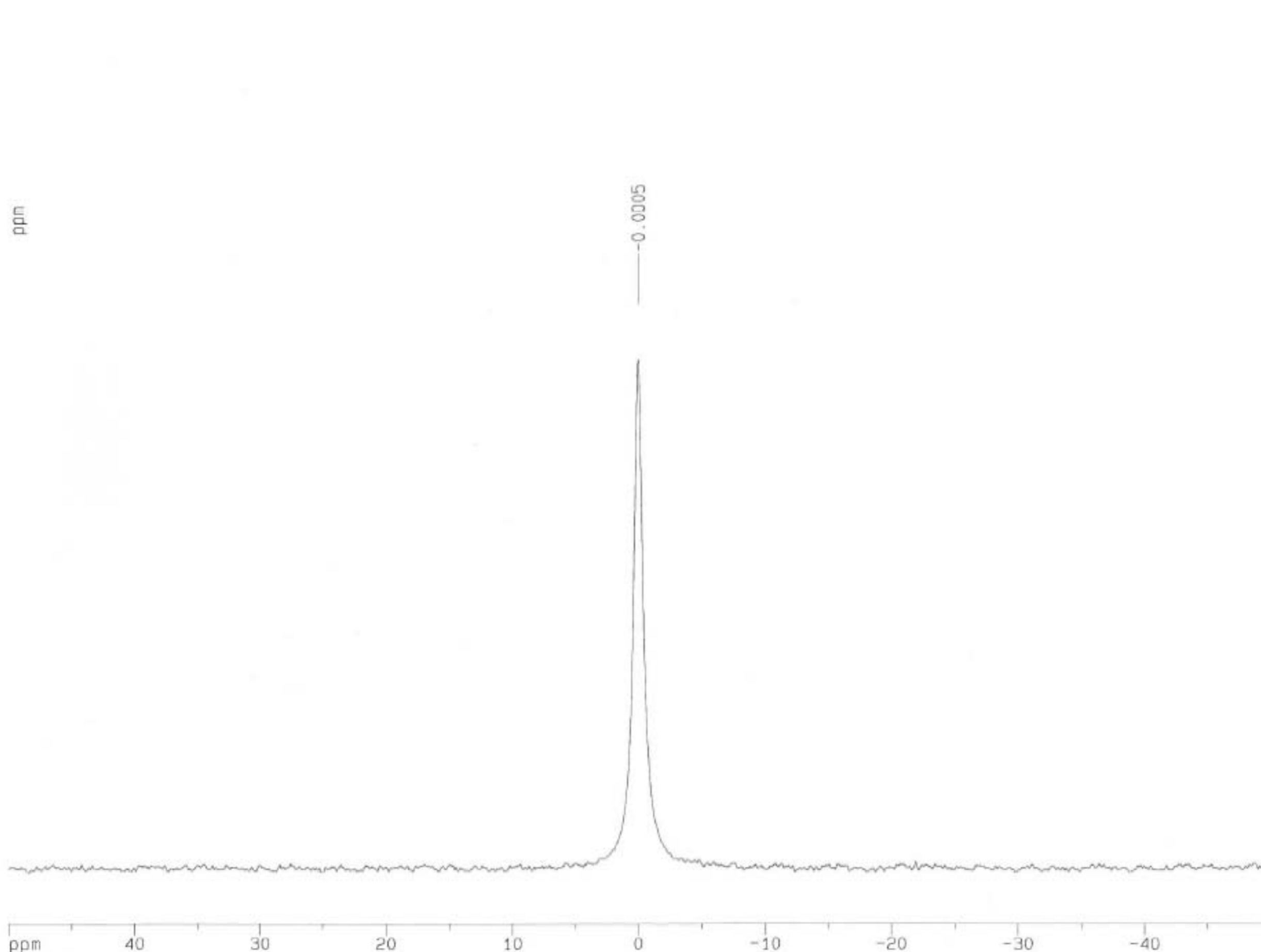
----- CHANNEL f1 -----
NUC1 17O
P1 19.00 usec
PL1 0.00 dB
SFO1 67.8018070 MHz

F2 - Processing parameters
SI 32768
SF 67.8001025 MHz
WDW EM
SSB 0
LB 10.00 Hz
GB 0
PC 1.00

1D NMR plot parameters
CX 20.00 cm
CY 9.00 cm
F1P 50.000 ppm
F1 3390.01 Hz
F2P -50.000 ppm
F2 -3390.01 Hz
PPMCM 5.00000 ppm/cm
HZCM 339.00052 Hz/cm

Figure 3. Cluster Size of Electrolyzed Water-1 Determined with NMR

B/017 (Half width : 55.45Hz)



Current Data Parameters
NAME oct24-at-ijh
EXPNO 2
PROCNO 1

F2 - Acquisition Parameters
Date_ 20061024
Time 13.59
INSTRUM spect
PROBHD 5 mm BBI 1H/2H
PULPROG zg
TD 65536
SOLVENT D2O
NS 512
DS 0
SNH 13550.136 Hz
FIDRES 0.206759 Hz
AQ 2.4183652 sec
RG 35.9
DX 36.900 usec
DE 6.00 usec
TE 300.0 K
D1 0.50000000 sec

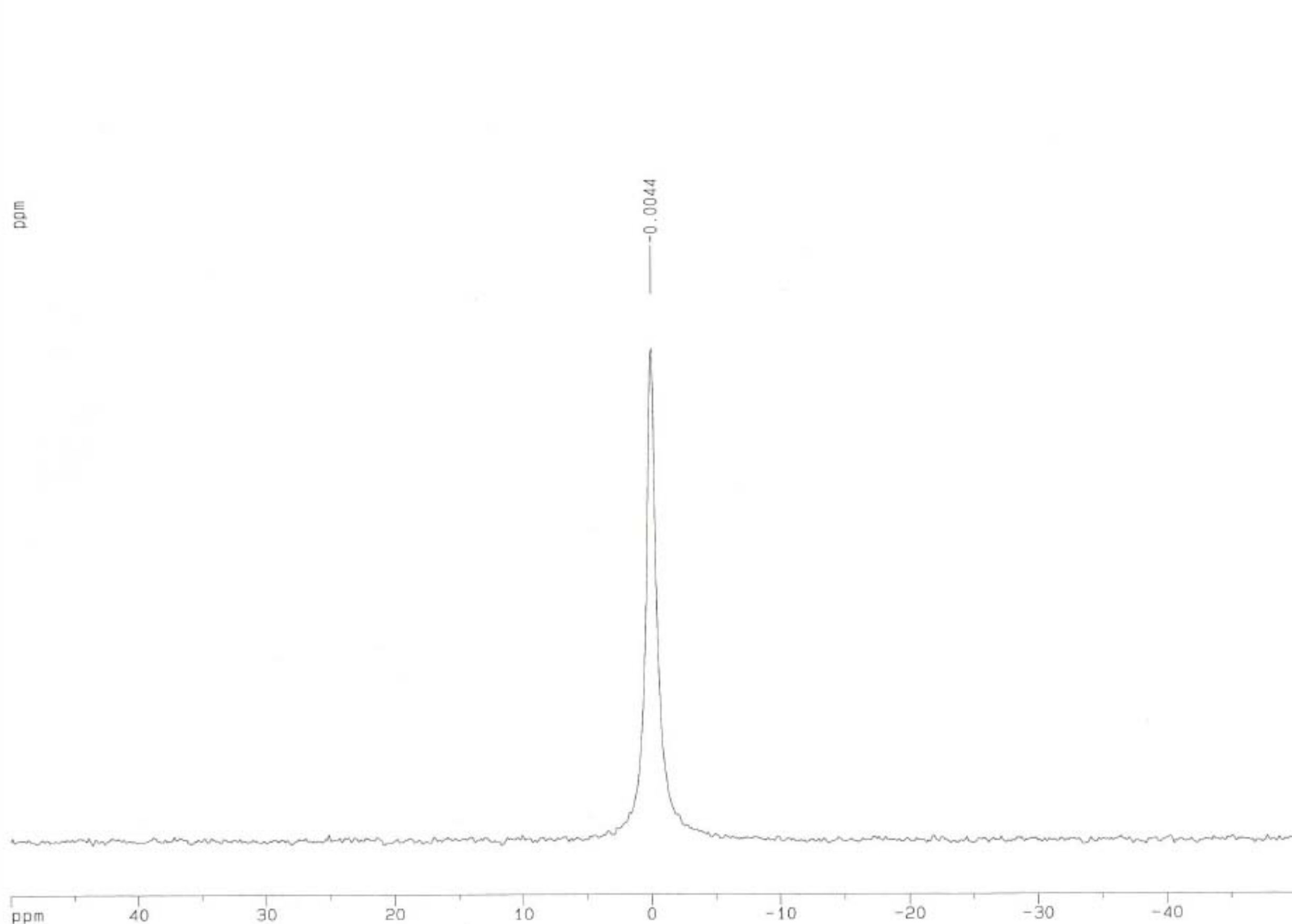
==== CHANNEL f1 =====
NUC1 17O
P1 19.00 usec
PL1 0.00 dB
SF01 67.8018070 MHz

F2 - Processing parameters
SI 32768
SF 67.8001008 MHz
WDW EM
SSB 0
LB 10.00 Hz
GB 0
PC 1.00

1D NMR plot parameters
CX 20.00 cm
CY 9.00 cm
F1P 50.000 ppm
F1 3390.01 Hz
F2P -50.000 ppm
F2 -3390.01 Hz
PPMCM 5.00000 ppm/cm
HZCM 339.00052 Hz/cm

Figure 4. Cluster Size of Electrolyzed Water-2 Determined with NMR

C/017 (Half width : 55.58Hz)



Current Data Parameters
NAME oct24-at-ijh
EXPNO 3
PROCNO 1

F2 - Acquisition Parameters
Date_ 20061024
Time 14.30
INSTRUM spect
PROBHD 5 mm BBI 1H/2H
PULPRDG 2g
TD 65536
SOLVENT D2O
NS 512
DS 0
SWH 13550.136 Hz
FIDRES 0.206759 Hz
AQ 2.4183652 sec
RG 35.9
DW 36.900 usec
DE 6.00 usec
TE 300.0 K
D1 0.50000000 sec

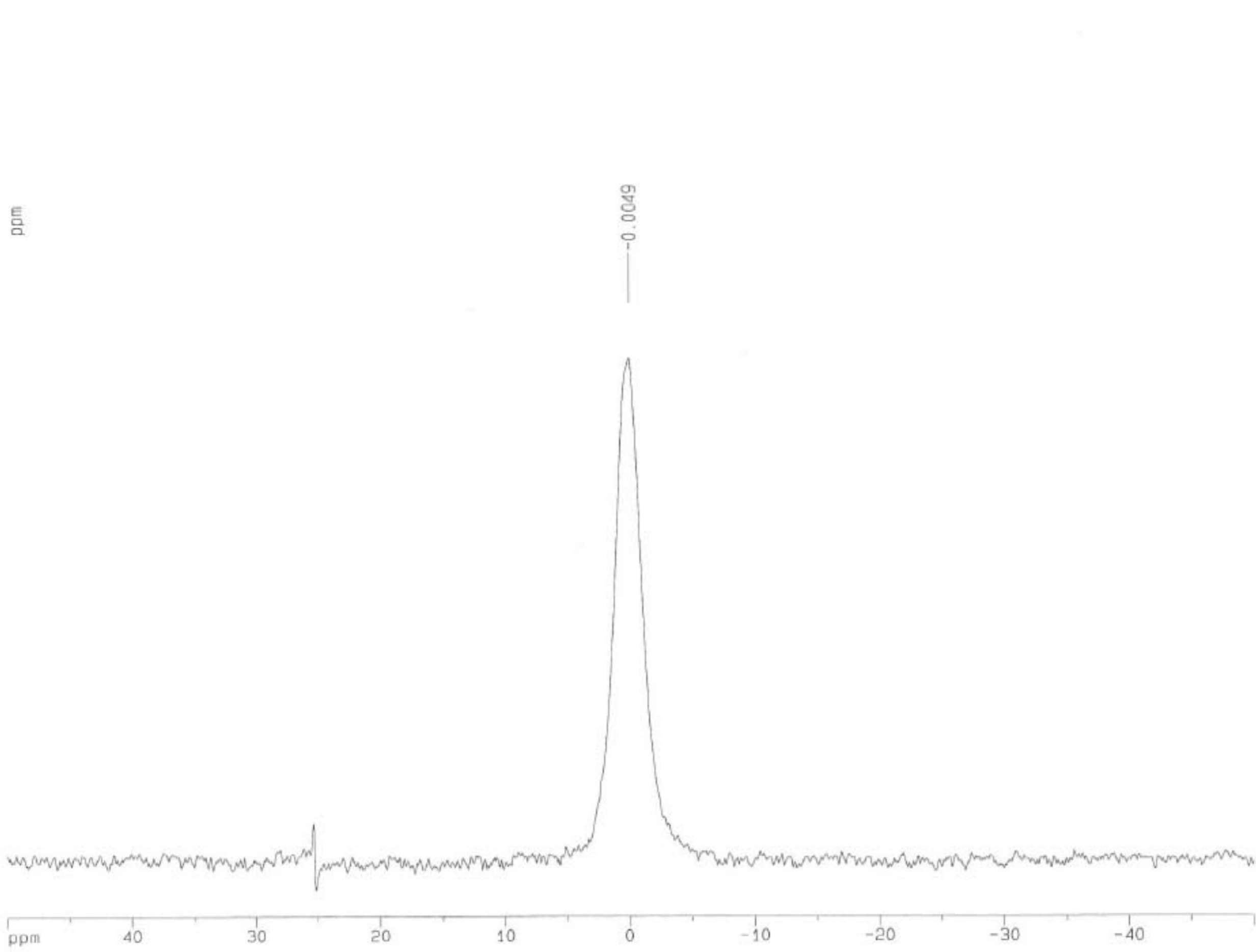
----- CHANNEL f1 -----
NUC1 17O
P1 19.00 usec
PL1 0.00 dB
SFO1 67.8018070 MHz

F2 - Processing parameters
SI 32768
SF 67.8001021 MHz
WDW EM
SSB 0
LB 10.00 Hz
GB 0
PC 1.00

1D NMR plot parameters
CX 20.00 cm
CY 9.00 cm
F1P 50.000 ppm
F1 3390.01 Hz
F2P -50.000 ppm
F2 -3390.01 Hz
PPMCM 5.00000 ppm/cm
HZCM 339.00052 Hz/cm

Figure 5. Cluster Size of Electrolyzed Water-3 Determined with NMR

E/017 (Half width : 154.99Hz)



```
Current Data Parameters
NAME      oct24-at-ijh
EXPNO     5
PROCNO    1

F2 - Acquisition Parameters
Date_     20061024
Time      15.54
INSTRUM   spect
PROBHD    5 mm BBI 1H/2H
PULPROG   zg
TD         65536
SOLVENT   D2O
NS         512
DS         0
SWH        13550.136 Hz
FIDRES     0.206759 Hz
AQ         2.4183652 sec
RG         35.9
DW         36.900 usec
DE         6.00 usec
TE         300.0 K
D1         0.50000000 sec

===== CHANNEL f1 =====
NUC1      17O
P1        19.00 usec
PL1       0.00 dB
SF01      67.8018070 MHz

F2 - Processing parameters
SI        32768
SF        67.8000934 MHz
WDW       EM
SSB       0
LB        10.00 Hz
GB        0
PC        1.00

1D NMR plot parameters
CX        20.00 cm
CY        9.00 cm
F1P       50.000 ppm
F1        3390.00 Hz
F2P       -50.000 ppm
F2        -3390.00 Hz
PPMCM     5.00000 ppm/cm
HZCM      339.00049 Hz/cm
```

Figure 6. Cluster Size of Purified Water